

PVINE THREE DEPARTURE (RNAV)

AL-346 (FAA)

RENO/TAHOE INTL (RNO)
RENO, NEVADA

D-ATIS
135.8 363.0
CLNC DEL
124.9 370.85
CPDLC
GND CON
121.9 348.6
RENO TOWER
118.7 257.8
NORCAL DEP CON
126.3 353.9

**TOP ALTITUDE:
FL190**

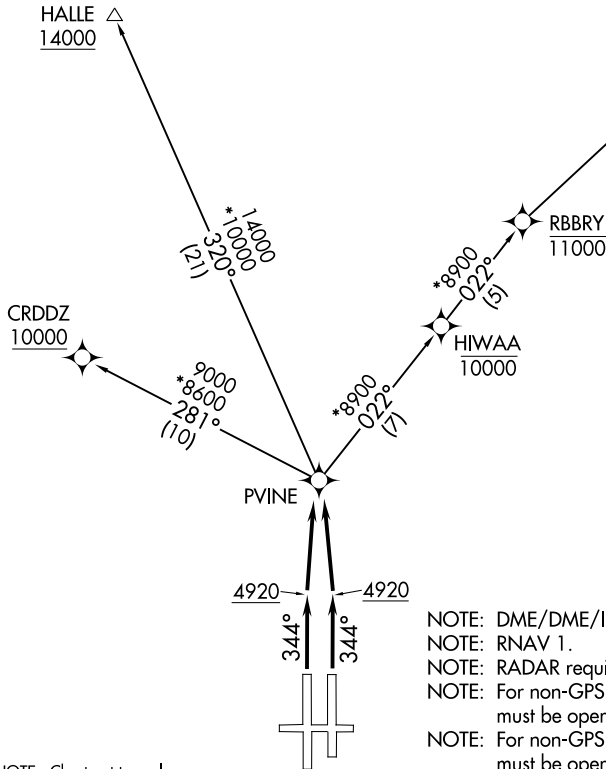
TAKEOFF MINIMUMS

Rwys 7, 25, 16L/R: NA - ATC.

Rwy 34L: Standard with minimum climb of 383' per NM to 12000.

Rwy 34R: 400-1½ with minimum climb of 383' per NM to 12000, or standard with minimum climb of 411' per NM to 4900, then minimum climb of 383' per NM to 12000.

PYGOW
17000



- NOTE: DME/DME/IRU or GPS required.
- NOTE: RNAV 1.
- NOTE: RADAR required for non-GPS equipped aircraft.
- NOTE: For non-GPS equipped aircraft, FMG and SWR must be operational for HALLE transition.
- NOTE: For non-GPS equipped aircraft, FMG and HZN must be operational for PYGOW transition.

NOTE: Chart not to scale.

DEPARTURE ROUTE DESCRIPTION

TAKEOFF RUNWAYS 34L/R: Climb heading 344° to 4920, then direct PVINE, thence. . . .

. . . .Maintain FL190 or assigned altitude. Expect filed altitude 5 minutes after departure.

CRDDZ TRANSITION (PVINE3.CRDDZ)

HALLE TRANSITION (PVINE3.HALLE)

PYGOW TRANSITION (PVINE3.PYGOW)

PVINE THREE DEPARTURE (RNAV)

SW-4, 04 NOV 2021 to 02 DEC 2021

SW-4, 04 NOV 2021 to 02 DEC 2021