

APP CRS	Rwy Idg	9000
164°	TDZE	4415
	Apt Elev	4415

RNAV (RNP) Y RWY 16L

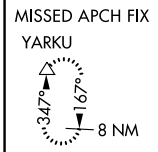
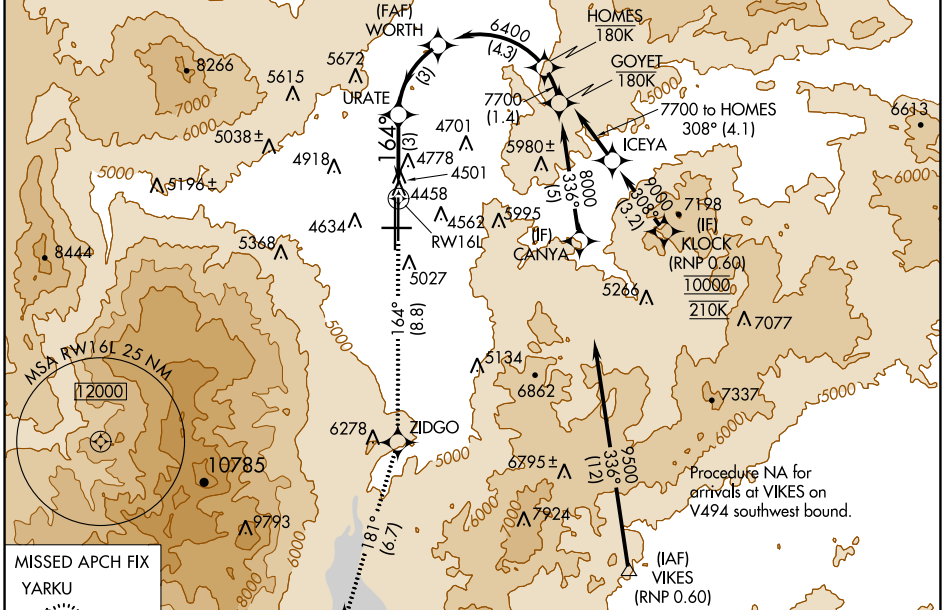
RENO/TAHOE INTL (RNO)

RNP AR APCH.
RF required.

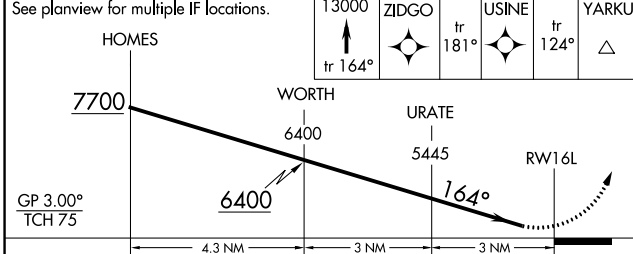
⚠ For uncompensated Baro-VNAV systems, procedure NA below -14°C or above 44°C.

MISSED APPROACH: Climb to 13000 on track 164° to ZIDGO and on track 181° to USINE and on track 124° to YARKU and hold, continue climb-in-hold to 13000.
* Missed approach requires minimum climb of 252 feet per NM to 7200.

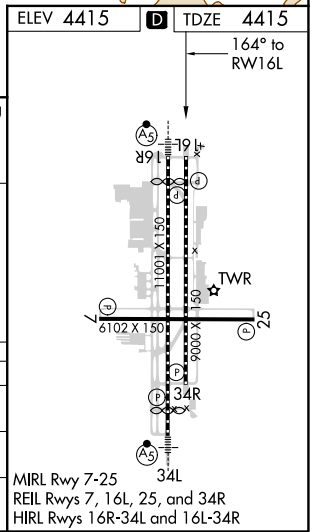
D-ATIS	NORCAL APP CON	RENO TOWER	GND CON	CLNC DEL	CPDLC
135.8 363.0	119.2 279.55 126.3 353.9	118.7 257.8	121.9 348.6	124.9 370.85	



ELEV 4415	D TDZE 4415
	164° to RWY 16L



CATEGORY	A	B	C	D
RNP 0.12 DA*		4792-1½	377 (400-1½)	
RNP 0.30 DA		5127-2½	712 (800-2½)	



AUTHORIZATION REQUIRED

MIRL Rwy 7-25
REIL Rwy 7, 16L, 25, and 34R
HIRL Rwy 16R-34L and 16L-34R

SW-4, 04 NOV 2021 to 02 DEC 2021

SW-4, 04 NOV 2021 to 02 DEC 2021