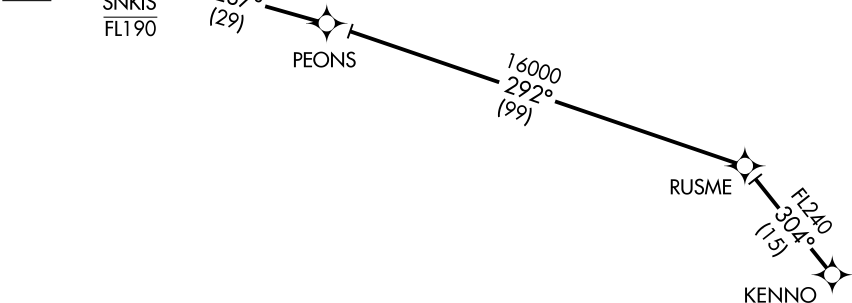
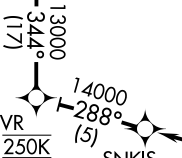
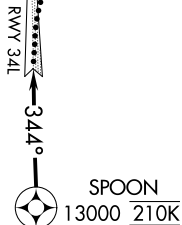
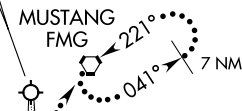


NORCAL APP CON  
119.2 279.55  
D-ATIS  
135.8 363.0

LOCALIZER 109.9  
I-AGY  
Chan 36



- NOTE: RADAR required for non-GPS aircraft.
- NOTE: DME/DME/IRU or GPS required.
- NOTE: RNAV 1.
- NOTE: For Turbojet and Turboprop aircraft only.
- NOTE: For non-GPS equipped aircraft TPH, MVA, OAL, and SWR DMEs must be operational.

NOTE: Chart not to scale.

ARRIVAL ROUTE DESCRIPTION

From KENNO via 304° track to RUSME, then via 292° track to PEONS, then via 287° track to SNKIS, then via 288° track to TARVR, then via 344° track to SPOON.

RWY 34L: Intercept I-AGY localizer. Proceed inbound, expect ILS/Visual approach.  
RWY 34R: On heading 344° expect RADAR vectors to final approach course.

LOST COMMUNICATIONS: At SPOON, intercept and execute Rwy 34L ILS approach. If unable, turn right direct to FMG and hold, maintain 12000.

SW-4, 04 NOV 2021 to 02 DEC 2021

SW-4, 04 NOV 2021 to 02 DEC 2021