

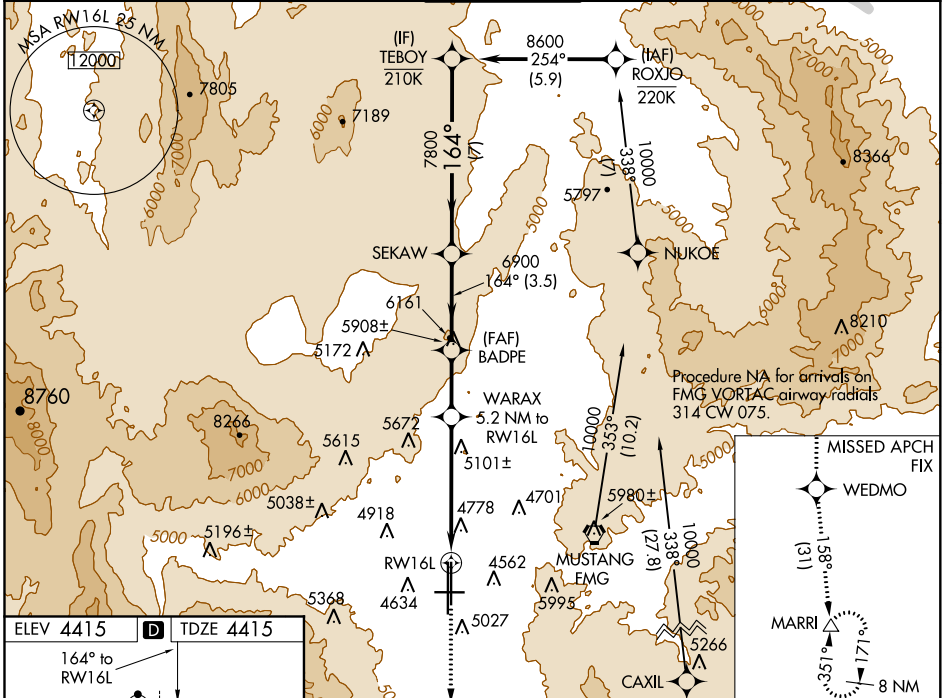
WAAS CH <b>72909</b> <b>W16A</b>	APP CRS <b>164°</b>	Rwy Idg TDZE Apt Elev	<b>9000</b> <b>4415</b> <b>4415</b>
--	------------------------	-----------------------------	---

# RNAV (GPS) X RWY 16L

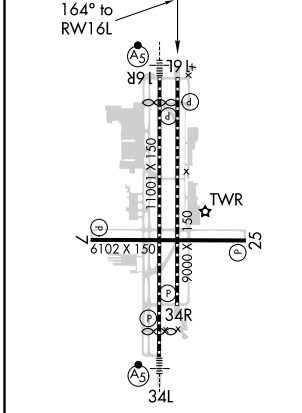
RENO/TAHOE INTL (RNO)

RNP APCH.			MISSED APPROACH: Climb to 13000 direct WEDMO and on track 158° to MARRI and hold.		
<p><b>▼</b> Circling Rwy 7 NA at night. Rwy 16L helicopter visibility reduction below ¾ SM NA. For uncompensated Baro-VNAV systems, LNAV/VNAV NA below -9°C or above 54°C.</p>					

D-ATIS <b>135.8 363.0</b>	NORCAL APP CON <b>119.2 279.55 126.3 353.9</b>	RENO TOWER <b>118.7 257.8</b>	GND CON <b>121.9 348.6</b>	CLNC DEL <b>124.9 370.85</b>	CPDLC
------------------------------	---	----------------------------------	-------------------------------	---------------------------------	-------



ELEV <b>4415</b>	<b>D</b>	TDZE <b>4415</b>
------------------	----------	------------------



MIRL Rwy 7-25  
REIL Rws 7, 16L, 25, and 34R  
HIRL Rws 16R-34L and 16L-34R

VGSi and RNAV glidepath not coincident (VGSi Angle 3.00/TCH 75).			
TEBOY	SEKAW	BADPE	WARAX 5.2 NM to RWY 16L *2.7 NM to RWY 16L
8600	7800	6900	*6140
GP 3.00° TCH 55	7 NM	3.5 NM	2.4 NM 2.5 NM 2.7 NM
CATEGORY	A	B	C
LPV DA		5149-2	734 (800-2)
LNAV/VNAV DA		5098-2	683 (700-2)
LNAV MDA	5360-1¼	945 (1000-1¼)	5360-2½ 945 (1000-2½)
<b>C</b> CIRCLING	5360-1¼	945 (1000-1¼)	6460-3 2045 (2100-3)

SW-4, 04 NOV 2021 to 02 DEC 2021

SW-4, 04 NOV 2021 to 02 DEC 2021