

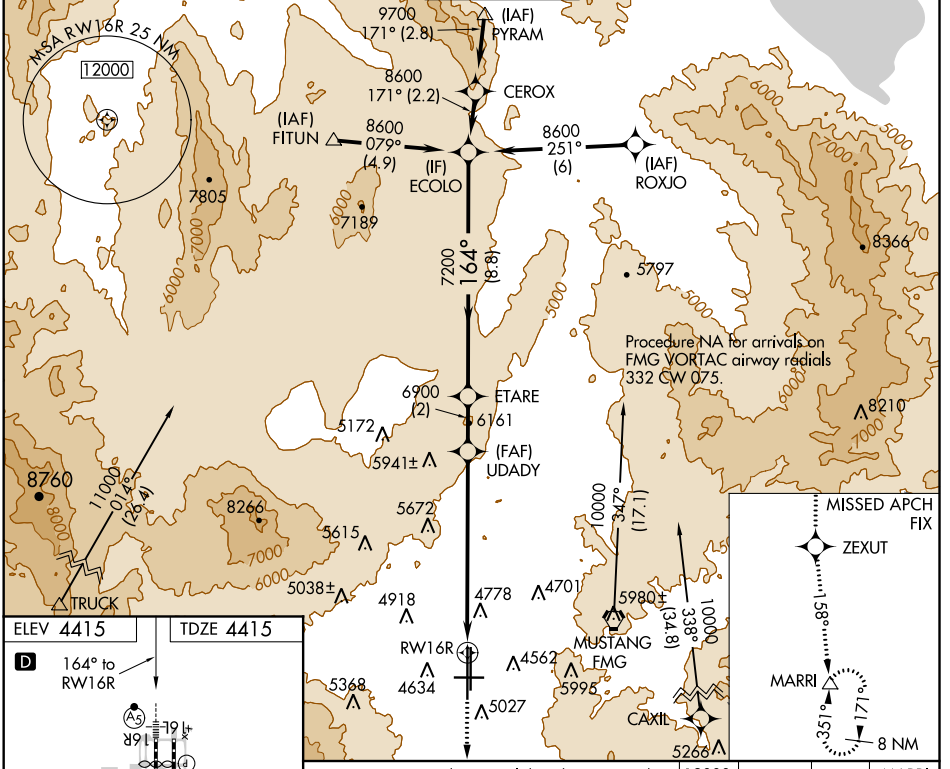


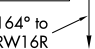
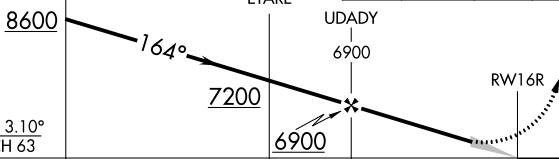

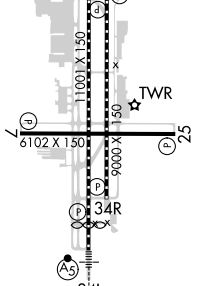
WAAS CH 78309 W 16B	APP CRS 164°	Rwy Idg 10001 TDZE 4415 Apt Elev 4415
---	------------------------	--

RNAV (GPS) X RWY 16R

RENO/TAHOE INTL (RNO)

RNP APCH.  Inoperative table does not apply to LNAV all Cats. For inoperative MALSR increase LPV all Cats visibility to 2 3/4.			MALSR 		MISSED APPROACH: Climb to 13000 direct ZEXUT and on track 158° to MARRI and hold.		
D-ATIS 135.8 363.0	NORCAL APP CON 119.2 279.55 126.3 353.9		RENO TOWER 118.7 257.8	GND CON 121.9 348.6	CLNC DEL 124.9 370.85	CPDLC	



ELEV 4415	TDZE 4415	VGSi and RNAV glidepath not coincident (VGSi Angle 3.06/TCH 77).		13000	ZEXUT	MARRI
				↑		tr 158°
		GP 3.10° TCH 63		8.8 NM	2 NM	7.2 NM
CATEGORY	A	B	C	D		
LPV DA	5239-2 1/4			824 (900-2 1/4)		
LNAV MDA	6200/60 1785 (1800-1/4)	6200-1 1/2 1785 (1800-1/2)	6200-3		1785 (1800-3)	