

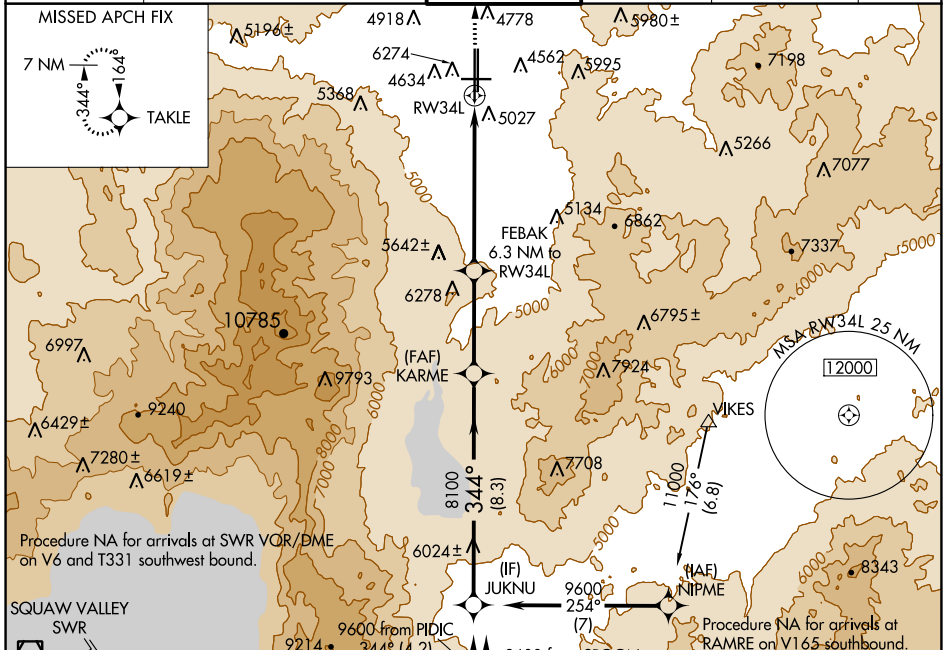
APP CRS <b>344°</b>	Rwy Idg <b>10011</b>
	TDZE <b>4410</b>
	Apt Elev <b>4415</b>

# RNAV (GPS) X RWY 34L

RENO/TAHOE INTL (RNO)

<p><b>⚠</b> Circling to Rwy 7 NA at night. DME/DME RNP-0.3 NA. For inoperative MALS R increase LNAV Cat A and B visibility to 1¼.</p>	<p><b>MALS R</b></p>	<p><b>MISSED APPROACH:</b> Climb to 10000 direct TAKLE and hold, continue climb-in-hold to 10000.</p>
---	----------------------	---

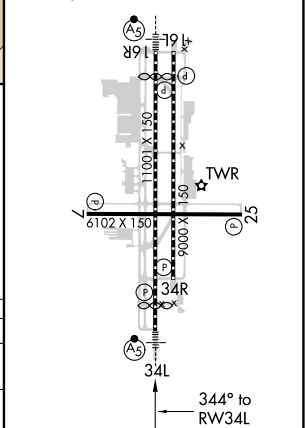
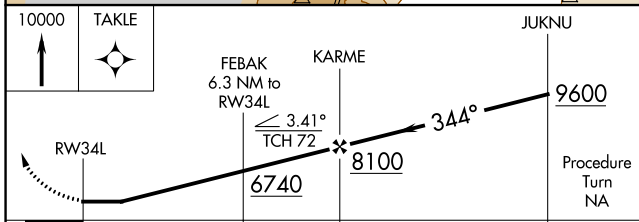
D-ATIS <b>135.8 363.0</b>	NORCAL APP CON <b>119.2 279.55 126.3 353.9</b>	<b>RENO TOWER</b> <b>118.7 257.8</b>	GND CON <b>121.9 348.6</b>	CLNC DEL <b>124.9 370.85</b>	CPDLC
------------------------------	---	---	-------------------------------	---------------------------------	-------



ELEV 4415	<b>D</b> TDZE 4410
HIRL Rwys 16R-34L and 16L-34R	
REIL Rwys 7, 16L, 25, and 34R	
MIRL Rwy 7-25	

Procedure NA for arrivals at SWR VOR/DME on V6 and T331 southwest bound.

Procedure NA for arrivals at RICHY on V28-113 southwest bound.



CATEGORY	A	B	C	D
LNAV MDA	5300-1 890 (900-1)		5300-2¼ 890 (900-2¼)	5300-2½ 890 (900-2½)
CIRCLING	5340-1¼ 925 (1000-1¼)		5340-2¾ 925 (1000-2¾)	5340-3 925 (1000-3)

SW-4, 04 NOV 2021 to 02 DEC 2021

SW-4, 04 NOV 2021 to 02 DEC 2021