

APP CRS 344°	Rwy Idg 9000
	TDZE 4408
	Apt Elev 4415

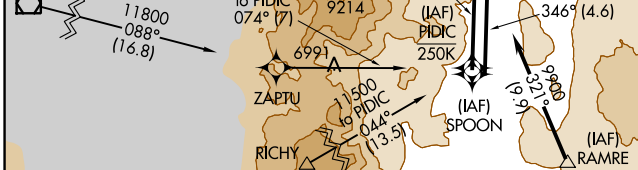
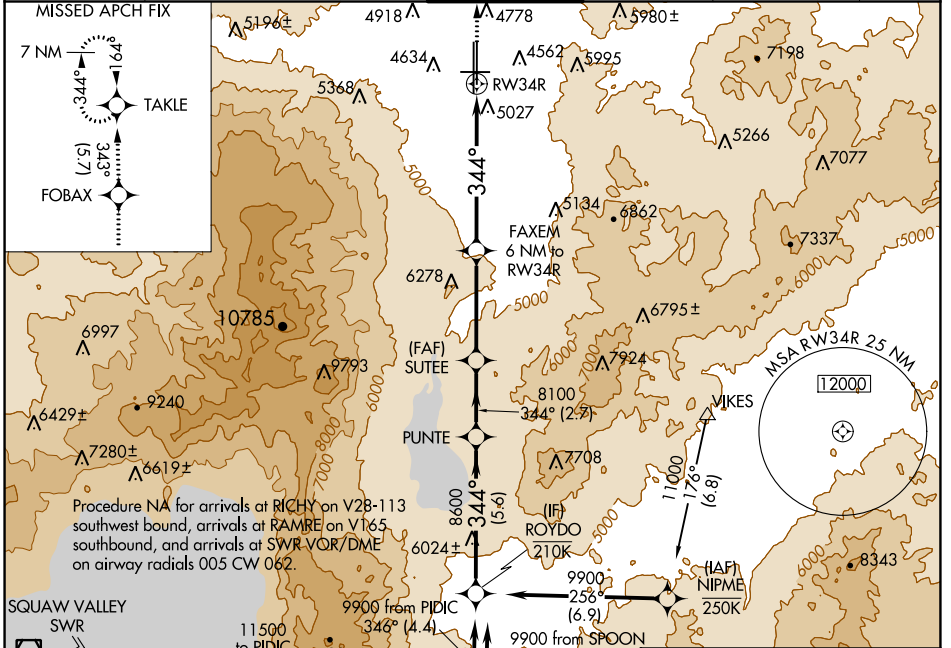
RNAV (GPS) X RWY 34R

RENO/TAHOE INTL (RNO)

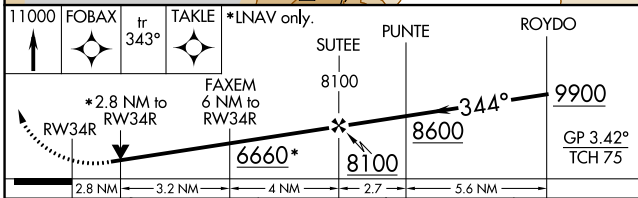
RNP APCH.
 ▼ Circling Rwy 7 NA at night. Rwy 34R helicopter visibility reduction below 3/4 SM NA. Baro-VNAV NA.

MISSED APPROACH: Climb to 11000 direct FOBOX and on track 343° to TAKLE and hold, continue climb-in-hold to 11000.
 # Missed approach requires minimum climb of 250 feet per NM to 5600.

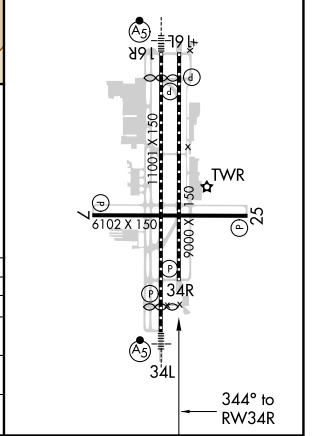
D-ATIS 135.8 363.0	NORCAL APP CON 119.2 279.55 126.3 353.9	RENO TOWER 118.7 257.8	GND CON 121.9 348.6	CLNC DEL 124.9 370.85	CPDLC
------------------------------	---	----------------------------------	-------------------------------	---------------------------------	-------



ELEV 4415	TDZE 4408
HIRL Rwys 16R-34L and 16L-34R	
REIL Rwys 7, 16L, 25, and 34R	
MIRL Rwy 7-25	



CATEGORY	A	B	C	D
LNNAV/VNAV DA	5471-4 1063 (1100-4)			
LNNAV MDA #	5380-1 1/4 972 (1000-1 1/4)	5380-1 1/2 972 (1000-1 1/2)	5380-3	972 (1000-3)
LNNAV MDA	5500-1 1/4 1092 (1100-1 1/4)	5500-1 1/2 1092 (1100-1 1/2)	5500-3	1092 (1100-3)
CIRCLING	5500-1 1/4 1085 (1100-1 1/4)	5500-1 1/2 1085 (1100-1 1/2)	6460-3	2045 (2100-3)



SW-4, 04 NOV 2021 to 02 DEC 2021

SW-4, 04 NOV 2021 to 02 DEC 2021