

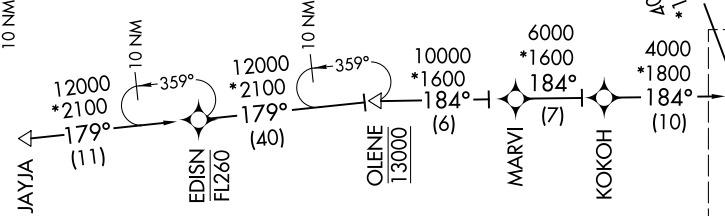
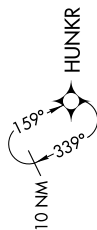
DADES SEVEN ARRIVAL (RNAV) Transition Routes

TAMPA, FLORIDA

SE-3, 04 NOV 2021 to 02 DEC 2021

TAMPA APP CON
135.5 279.6
KMCF ATIS
133.825 270.1
PIE ATIS
134.5
TPA D-ATIS
126.45
VDF AWOS-3
121.125

- NOTE: RADAR required.
- NOTE: RNAV 1.
- NOTE: DME/DME/IRU or GPS required.
- NOTE: Descend via MACH number until intercepting 280K.
- NOTE: Maintain 280K until slowed by the STAR or assigned by ATC.
- NOTE: Primary landing Rwy's 1L/R, 19L/R.
- NOTE: TPA landing South: Expect 250K at OLENE.
- NOTE: TPA landing North: Expect RADAR vectors prior to JSTRM.
- NOTE: TPA landing South: Expect RADAR vectors prior to JKBAL.
- NOTE: Landing all satellite airports: Expect RADAR vectors prior to GSPAR.
- NOTE: EDISN, BEAUX and NICK TRANSITIONS, ATC assigned only.
- NOTE: Turbojet and turboprop aircraft only.



- BEAUX TRANSITION (BEAUX.DADES7)
- EDISN TRANSITION (EDISN.DADES7)
- HIBAC TRANSITION (HIBAC.DADES7)
- JAYJA TRANSITION (JAYJA.DADES7)
- NICK TRANSITION (NICK.DADES7)

(NARRATIVE ON FOLLOWING PAGE)
(CONTINUED IN FOLLOWING PAGE)

See following page
for Arrival Routes

NOTE: Chart not to scale.

SE-3, 04 NOV 2021 to 02 DEC 2021

DADES SEVEN ARRIVAL (RNAV) Transition Routes

TAMPA, FLORIDA