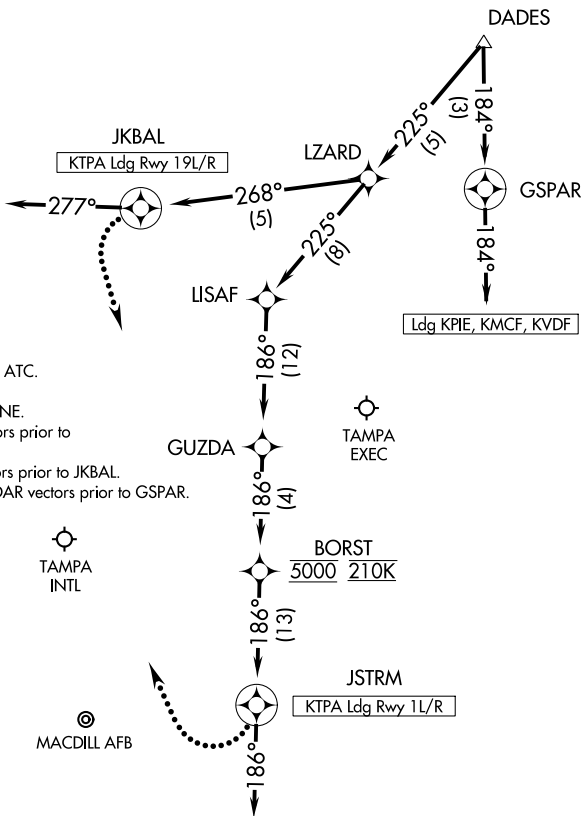


DADES SEVEN ARRIVAL (RNAV) Arrival Route

TAMPA, FLORIDA

TAMPA APP CON
 135.5 279.6
 KMCF ATIS
 133.825 270.1
 PIE ATIS
 134.5
 TPA D-ATIS
 126.45
 VDF AWOS-3
 121.125

NOTE: RADAR required.
 NOTE: RNAV 1.
 NOTE: DME/DME/IRU or GPS required.
 NOTE: Descend via MACH number until intercepting 280K. Maintain 280K until slowed by the STAR or assigned by ATC.
 NOTE: Primary landing Rwy 1L/R, 19L/R.
 NOTE: TPA landing South: Expect 250K at OLENE.
 NOTE: TPA landing North: Expect RADAR vectors prior to JSTRM.
 NOTE: TPA landing South: Expect RADAR vectors prior to JKBAL.
 NOTE: Landing all satellite airports: Expect RADAR vectors prior to GSPAR.
 NOTE: Turbopjet and turboprop aircraft only.



NOTE: Chart not to scale.

ARRIVAL ROUTE DESCRIPTION

LANDING KTPA RUNWAYS 1L/R: From DADES on track 225° to LZARD, then on track 225° to LISAF, then on track 186° to GUZDA, then on track 186° to cross BORST at 5000 and at 210K, then on track 186° to JSTRM, then on heading 186° or as assigned by ATC. Expect RADAR vectors to final approach course.

LANDING KTPA RUNWAYS 19L/R: From DADES on track 225° to LZARD, then on track 268° to JKBAL, then on heading 277° or as assigned by ATC. Expect RADAR vectors to final approach course.

LANDING KPIE/KMCF/KVDF: From DADES on track 184° to GSPAR, then on track 184°. Expect RADAR vectors to final approach course.

LOST COMMUNICATIONS

KTPA LANDING NORTH: Continue track to JSTRM, turn right to intercept Rwy 1L final approach course, conduct approach.

KTPA LANDING SOUTH: Continue track to JKBAL, turn left to intercept Rwy 19L final approach course, conduct approach.

SE-3, 04 NOV 2021 to 02 DEC 2021

SE-3, 04 NOV 2021 to 02 DEC 2021