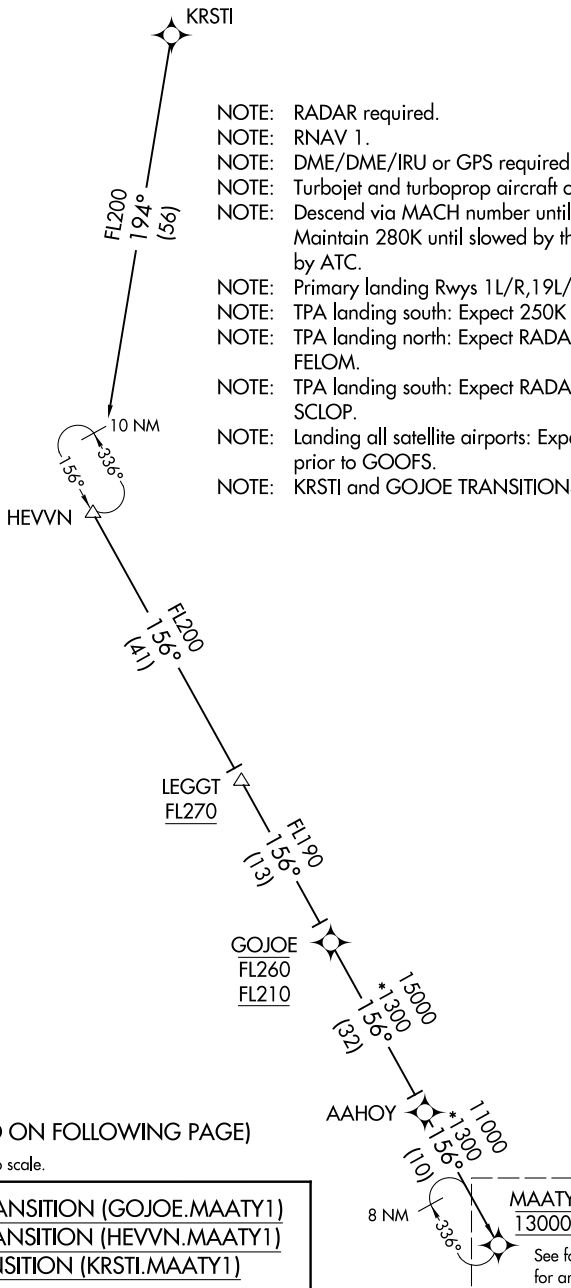


TAMPA APP CON
118.8 239.3
KMCF ATIS
133.825 270.1
LAL ATIS
118.025
TPA D-ATIS
126.45
VDF AWOS-3
121.125

- NOTE: RADAR required.
- NOTE: RNAV 1.
- NOTE: DME/DME/IRU or GPS required.
- NOTE: Turbojet and turboprop aircraft only.
- NOTE: Descend via MACH number until intercepting 280K. Maintain 280K until slowed by the STAR or assigned by ATC.
- NOTE: Primary landing Rwy's 1L/R, 19L/R.
- NOTE: TPA landing south: Expect 250K at MAATY.
- NOTE: TPA landing north: Expect RADAR vectors prior to FELOM.
- NOTE: TPA landing south: Expect RADAR vectors prior to SCLOP.
- NOTE: Landing all satellite airports: Expect RADAR vectors prior to GOOFS.
- NOTE: KRSTI and GOJOE TRANSITIONS, ATC assigned only.



(CONTINUED ON FOLLOWING PAGE)

NOTE: Chart not to scale.

GOJOE TRANSITION (GOJOE.MAATY1)
HEVNV TRANSITION (HEVNV.MAATY1)
KRSTI TRANSITION (KRSTI.MAATY1)

MAATY
13000
 See following page
 for arrival routes.

SE-3, 04 NOV 2021 to 02 DEC 2021

SE-3, 04 NOV 2021 to 02 DEC 2021