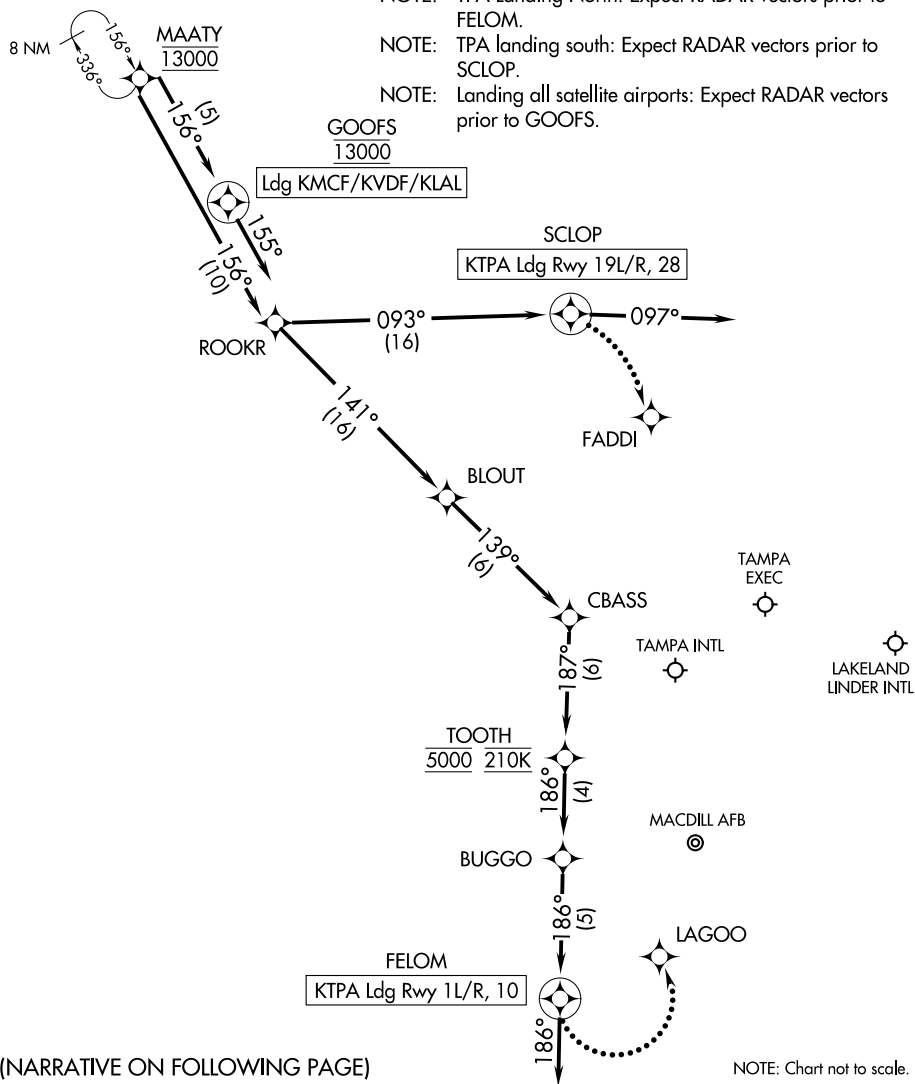


# MAATY ONE ARRIVAL (RNAV) Arrival Routes

TAMPA, FLORIDA

TAMPA APP CON  
 118.8 239.3  
 KMCF ATIS  
 133.825 270.1  
 LAL ATIS  
 118.025  
 TPA D-ATIS  
 126.45  
 VDF AWOS-3  
 121.125

- NOTE: RADAR required.
- NOTE: RNAV 1.
- NOTE: DME/DME/IRU or GPS required.
- NOTE: Turbojet and turboprop aircraft only.
- NOTE: Descend via MACH number until intercepting 280K. Maintain 280K until slowed by the STAR or assigned by ATC.
- NOTE: Primary landing Rwy's 1L/R, 19L/R.
- NOTE: TPA landing south: Expect 250K at MAATY.
- NOTE: TPA Landing North: Expect RADAR vectors prior to FELOM.
- NOTE: TPA landing south: Expect RADAR vectors prior to SCLOP.
- NOTE: Landing all satellite airports: Expect RADAR vectors prior to GOOFS.



# MAATY ONE ARRIVAL (RNAV) Arrival Routes

TAMPA, FLORIDA