

TAMPA, FLORIDA

# ILS or LOC RWY 23

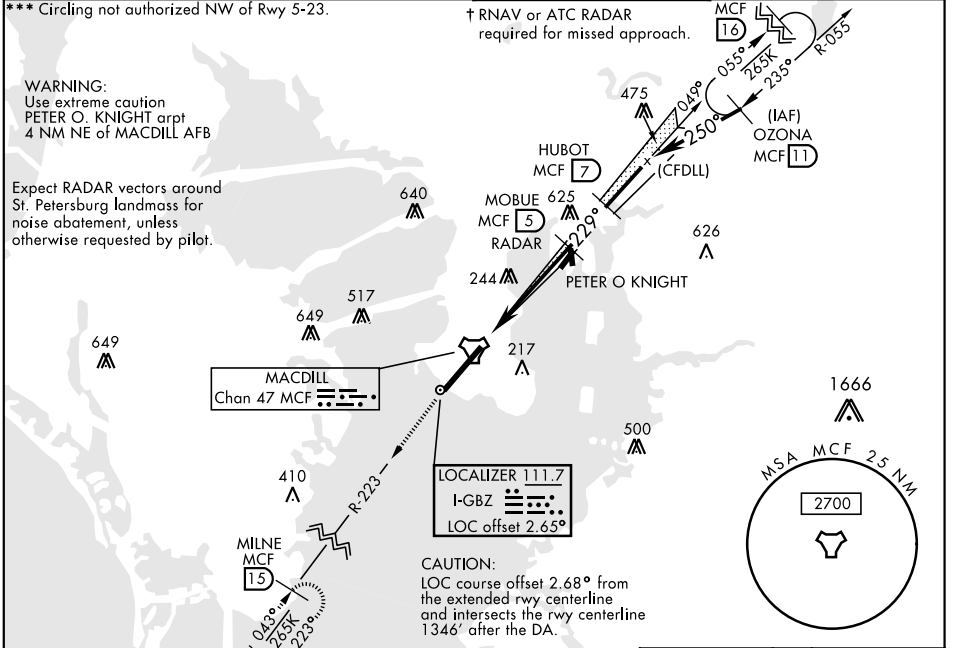
LOC I-GBZ <b>111.7</b>	APCH CRS <b>229°</b>	Rwy Ldg <b>11,421</b>
		TDZE <b>14</b>
		Arprt Elev <b>14</b>

AL-418 [USAF]

MACDILL AFB (KMCF)

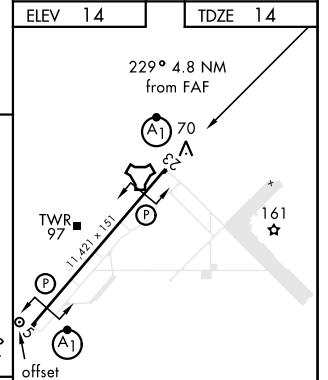
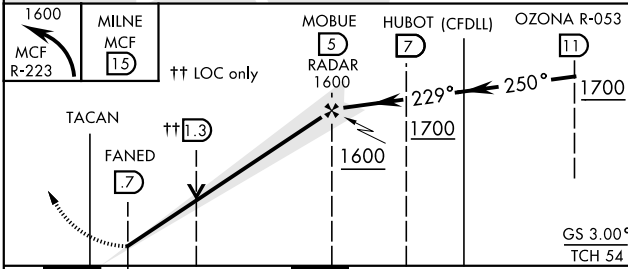
RADAR or DME required.	ALSF-1 	† MISSED APPROACH: Climb to 1600 via MCF R-223 to MILNE and hold.
* When ALS inop, increase RVR to 40, vis to ¼ mile.		
** When ALS inop, increase CAT AB RVR to 55, vis to 1 mile; CAT CDE vis to 1 ½ miles.		

ATIS <b>133.825 270.1</b>	TAMPA APP CON <b>124.95 354.0</b>	MACDILL TOWER <b>120.175 294.7</b>	GND CON <b>118.575 275.8</b>
------------------------------	--------------------------------------	---------------------------------------	---------------------------------



EMERG SAFE ALT 100 NM 3000

1600 MCF R-223	MILNE MCF 15	MOBUE RADAR 1600	HUBOT (CFDLL) 229°	OZONA R-053 250°
†† LOC only				



CATEGORY	A	B	C	D	E
S-ILS 23 *	264/24		250	(300-½)	
S-LOC 23 **	440/24	426 (500-½)	440/40	426 (500-¾)	
CIRCLING ***	500-1 486 (500-1)	540-1 526 (600-1)	540-1½ 526 (600-1½)	580-2 566 (600-2)	1020-3 1006 (1100-3)

HIRL Rwy 5-23					
LOC FAF to MAP 4.3 NM					
Knots	60	90	120	150	180
Min:Sec	4:18	2:52	2:09	1:43	1:26

TAMPA, FLORIDA  
Orig 31DEC20

27°51'N-82°31'W

MACDILL AFB (KMCF)

# ILS or LOC RWY 23

SE-3, 04 NOV 2021 to 02 DEC 2021

SE-3, 04 NOV 2021 to 02 DEC 2021