

TAMPA, FLORIDA

ILS or LOC RWY 5

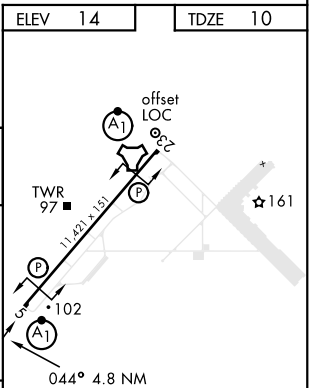
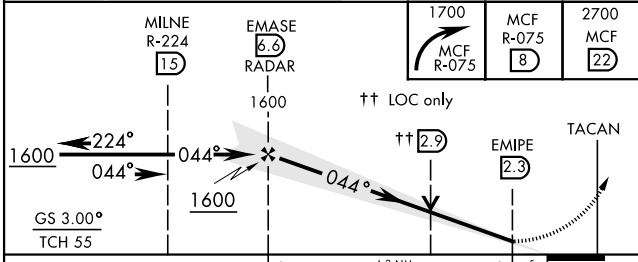
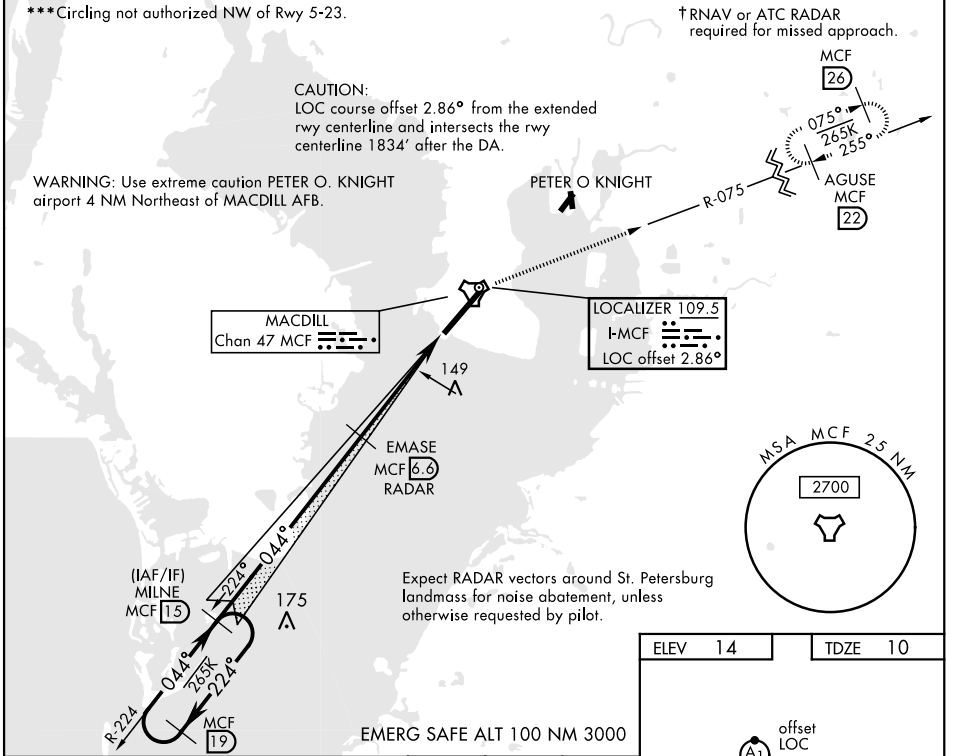
LOC I-MCF 109.5	APCH CRS 044°	Rwy Idg 11,421 TDZE 10 Arpt Elev 14
---------------------------	-------------------------	--

AL-418 [USAF]

MACDILL AFB (KMCF)

RADAR or DME required.		ALSIF-1 	† MISSED APPROACH: Climb to 2700 via MCF TACAN R-075 to MCF 22 DME and hold. Cross 8 DME at 1700.
*When ALS inop, increase RVR to 40, vis to 3/4 mile. **When ALS inop, increase CAT AB RVR to 55, vis to 1 mile; CAT CDE RVR to 60, vis to 1 1/8 miles.			

ATIS 133.825 270.1	TAMPA APP CON 124.95 354.0	MACDILL TOWER 120.175 294.7	GND CON 118.575 275.8
------------------------------	--------------------------------------	---------------------------------------	---------------------------------



CATEGORY	A	B	C	D	E	
S-ILS 5 *	260/24		250	(300-1/2)		
S-LOC 5 **	420/24	410 (500-1/2)	420/40	410	(500-3/4)	
CIRCLING ***	500-1 486 (500-1)	540-1 526 (600-1)	540-1 1/2 526 (600-1 1/2)	580-2 566 (600-2)	1020-3 1006 (1100-3)	
						HIRL Rwy 5-23
						LOC FAF to MAP 4.3 NM
		Knots	60	90	120	150 180
		Min:Sec	4:18	2:52	2:09	1:43 1:26

TAMPA, FLORIDA
Orig 31DEC20

27°51'N-82°31'W

MACDILL AFB (KMCF)

ILS or LOC RWY 5

SE-3, 04 NOV 2021 to 02 DEC 2021

SE-3, 04 NOV 2021 to 02 DEC 2021