

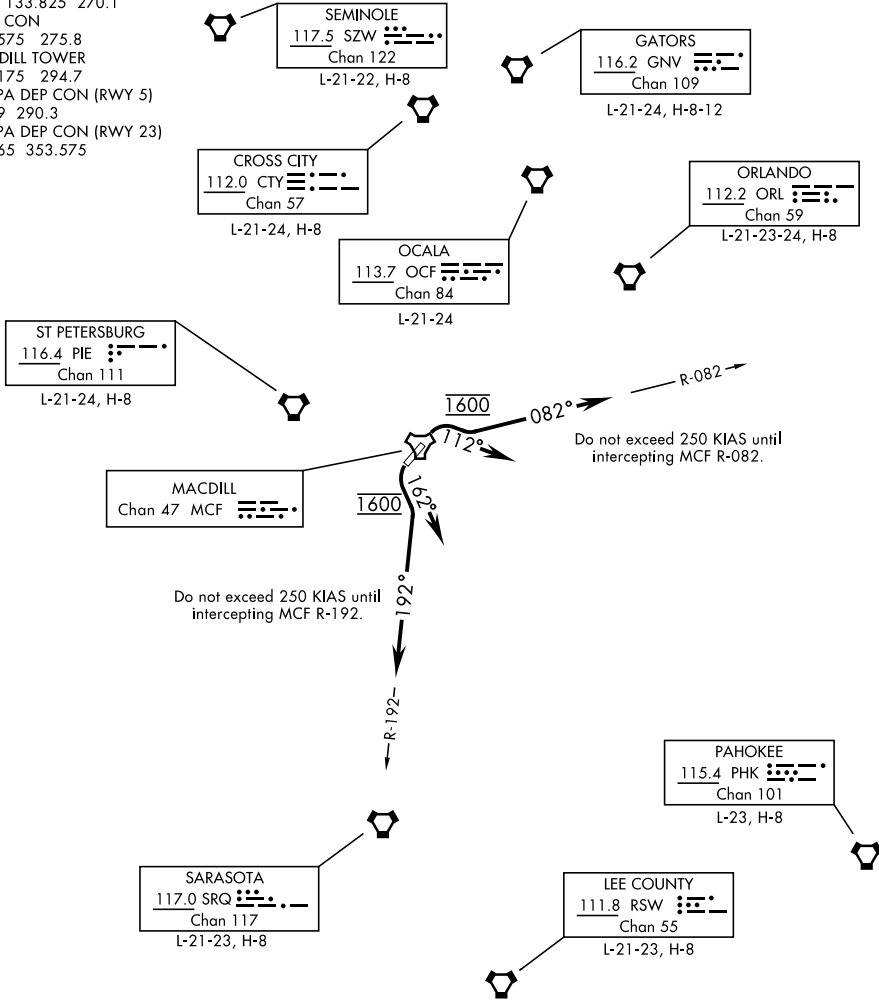
MACDILL ONE DEPARTURE (MCF1 • MCF)

AL-418 [USAF]

MACDILL AFB (KMCF)

TAMPA, FLORIDA

ATIS 133.825 270.1
 GND CON
 118.575 275.8
 MACDILL TOWER
 120.175 294.7
 TAMPA DEP CON (RWY 5)
 119.9 290.3
 TAMPA DEP CON (RWY 23)
 119.65 353.575



SE-3, 04 NOV 2021 to 02 DEC 2021

SE-3, 04 NOV 2021 to 02 DEC 2021

NOTE: Chart not to scale

NA for CAT E aircraft

DEPARTURE ROUTE DESCRIPTION

TAKE-OFF RWY 5: Climbing right turn heading 112°, maintain 1600, intercept MCF R-082 outbound, expect RADAR vectors. Expect clearance to filed altitude within 10 min after departure.

TAKE-OFF RWY 23: Climbing left turn heading 162°, maintain 1600, intercept MCF R-192 outbound, expect RADAR vectors. Expect clearance to filed altitude within 10 min after departure.

MACDILL ONE DEPARTURE (MCF1 • MCF)

Amdt 1 31DEC20

TAMPA, FLORIDA
MACDILL AFB (KMCF)