

TAMPA, FLORIDA

# RNAV (GPS) RWY 23

APCH CRS	Rwy Idg	11,421
229°	TDZE	14
	Arpt Elev	14

AL-418 (USAF)

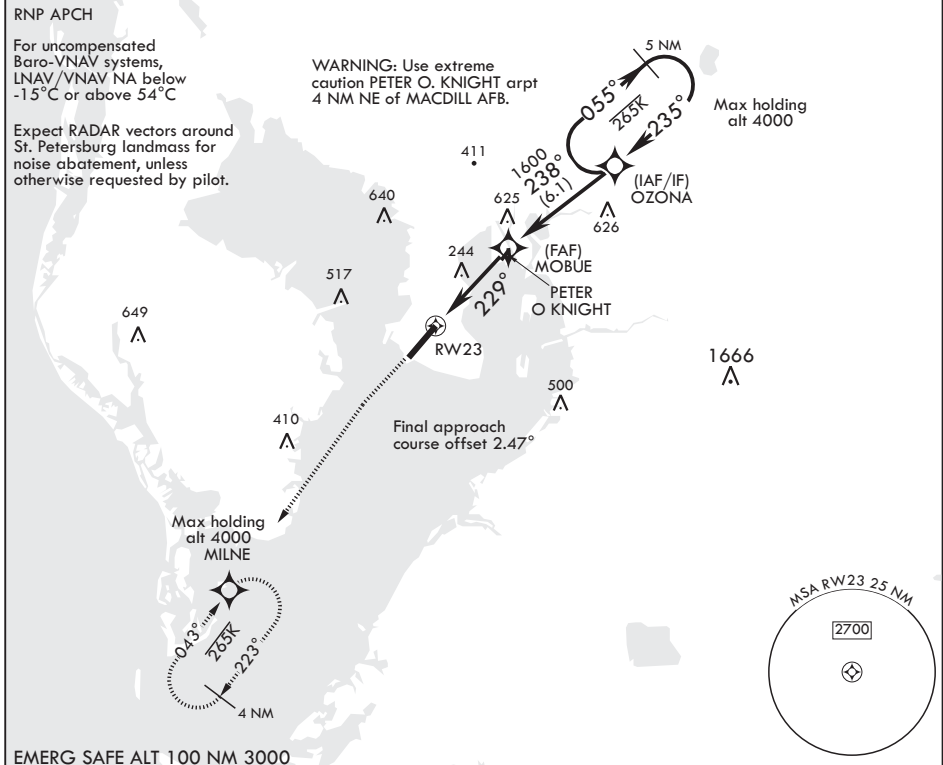
MACDILL AFB (KMCF)

\* When ALS inop, increase vis to 1 1/4 miles.  
 \*\* When ALS inop, increase CAT AB RVR to 55, vis to 1 mile; CAT CDE vis to 1 1/4 miles.  
 \*\*\* Circling not authorized NW of Rwy 5-23.

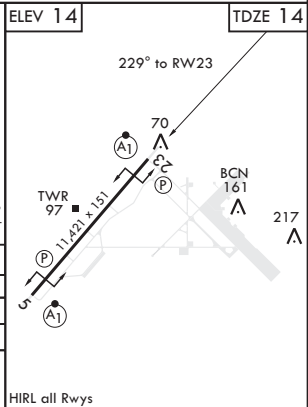
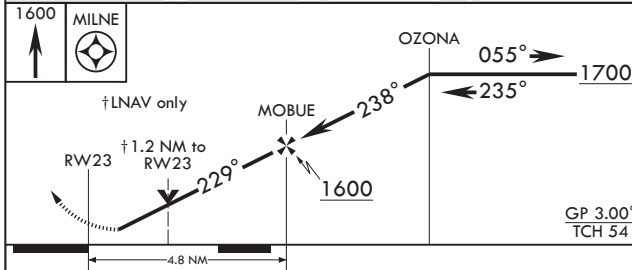


MISSED APPROACH: Climb to 1600, then climbing left turn to 1600 direct MILNE and hold.

ATIS 133.825 270.1	TAMPA APP CON 124.95 354.0	TOWER 120.175 294.7	GND CON 118.575 275.8
-----------------------	-------------------------------	------------------------	--------------------------



EMERG SAFE ALT 100 NM 3000



CATEGORY	A	B	C	D	E
LNAV/VNAV DA*	440/40		426	(500-3/4)	
LNAV MDA**	440/24 426 (500-1/2)		440/40	426	(500-3/4)
CIRCLING***	500-1 486 (500-1)	540-1 526 (600-1)	540-1 1/2 526 (600-1 1/2)	580-2 566 (600-2)	1020-3 1006 (1100-3)

TAMPA, FLORIDA  
 Orig 31DEC20

27°51'N - 82°31'W

MACDILL AFB (KMCF)

# RNAV (GPS) RWY 23

SE-3, 04 NOV 2021 to 02 DEC 2021

SE-3, 04 NOV 2021 to 02 DEC 2021