

TAMPA, FLORIDA

RNAV (GPS) RWY 5

APCH CRS	Rwy Idg	11,421
044°	TDZE	10
	Arprt Elev	14

AL-418 (USAF)

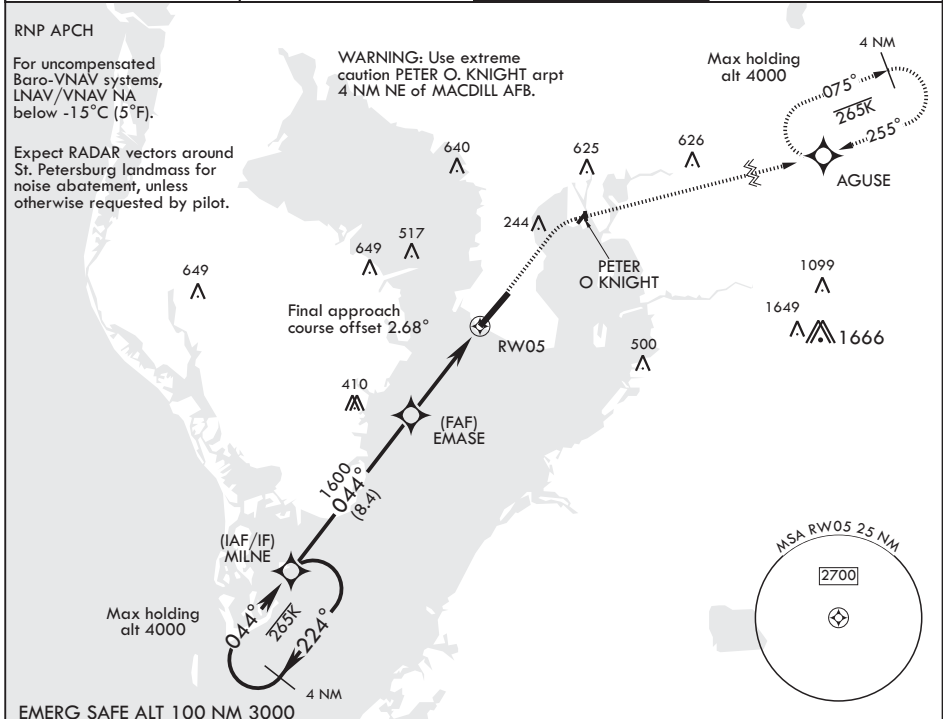
MACDILL AFB (KMCF)

* When ALS inop, increase CAT AB RVR to 40, vis to 3/4 mile, CAT CDE RVR to 45, vis to 7/8 mile.
 ** When ALS inop, increase CAT AB RVR to 55, vis to 1 mile, CAT CDE RVR to 60, vis to 1 1/8 miles.
 *** Circling not authorized NW of Rwy 5-23.

ALSF-1

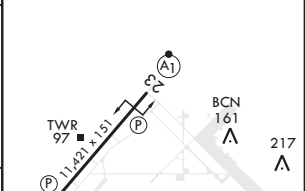
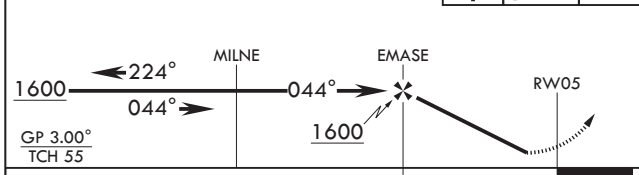
MISSED APPROACH: Climb to 1700 then climbing right turn to 2700 direct AGUSE and hold.

ATIS 133.825 270.1	TAMPA APP CON 124.95 354.0	TOWER 120.175 294.7	GND CON 118.575 275.8
-----------------------	-------------------------------	------------------------	--------------------------



EMERG SAFE ALT 100 NM 3000

1700	2700	AGUSE	ELEV 14	TDZE 10
------	------	-------	---------	---------



CATEGORY	A	B	C	D	E
LNAV/VNAV DA*	260/24 250 (300-1/2)	264/24 254 (300-1/2)	272/24 262 (300-1/2)	283/24 273 (300-1/2)	304/24 294 (300-1/2)
LNAV MDA**	420/24 410 (500-1/2)		420/40	410 (500-3/4)	
CIRCLING***	500-1 486 (500-1)	540-1 526 (600-1)	540-1 1/2 526 (600-1 1/2)	580-2 566 (600-2)	1020-3 1006 (1100-3)

TAMPA, FLORIDA 27°51'N - 82°31'W MACDILL AFB (KMCF)

Orig 31DEC20

RNAV (GPS) RWY 5

SE-3, 04 NOV 2021 to 02 DEC 2021

SE-3, 04 NOV 2021 to 02 DEC 2021