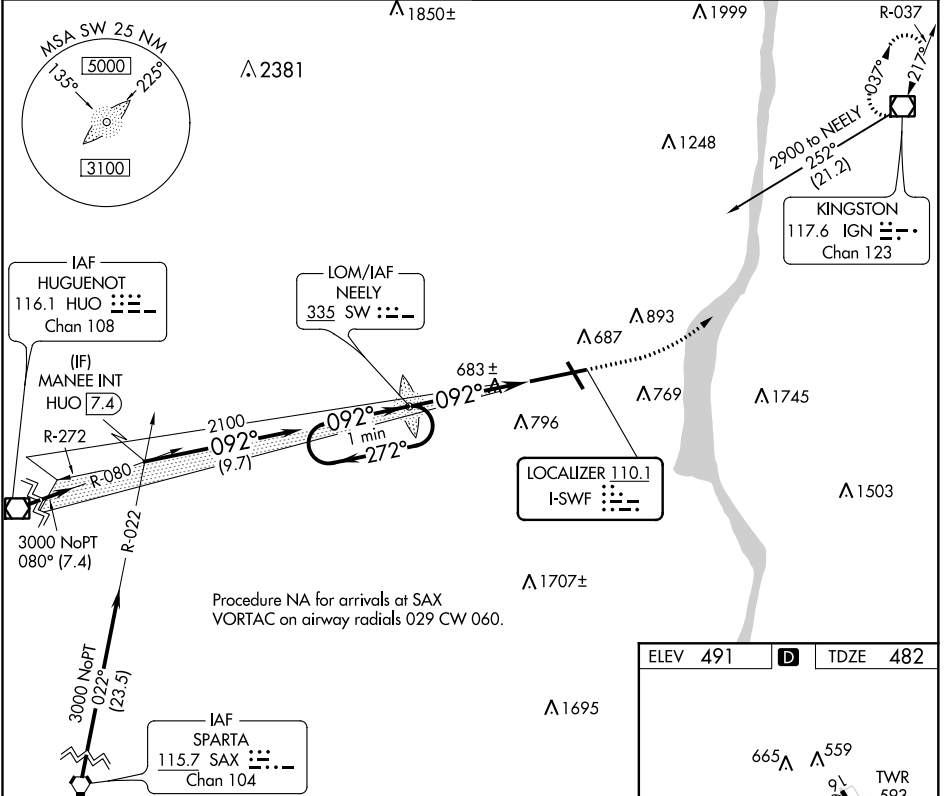


LOC I-SWF 110.1	APP CRS 092°	Rwy Idg TDZE Apt Elev	8817 482 491
---------------------------	------------------------	-----------------------------	---

ILS RWY 9 (SA CAT I)
NEW YORK STEWART INTL (SWF)

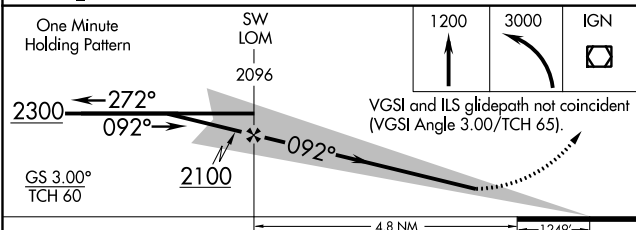
Requires specific OPSPEC, MSPEC, or LOA approval and use of HUD to DH.	ALSIF-2	MISSED APPROACH: Climb to 1200 then climbing left turn to 3000 direct IGN VOR/DME and hold.

ATIS 124.575	NEW YORK APP CON 132.75 363.1	STEWART TOWER 121.0 254.4	GND CON 121.9
------------------------	---	-------------------------------------	-------------------------



NE-2, 04 NOV 2021 to 02 DEC 2021

NE-2, 04 NOV 2021 to 02 DEC 2021



ELEV 491	D	TDZE 482
----------	----------	----------

665 Δ 559
TWR 593
546± \star
1817 X 150
540± Δ

TDZ/CL Rwy 9
HIRL Rwys 9-27 and 16-34
REIL Rwys 16, 27 and 34

CATEGORY	A	B	C	D
S-ILS 9		RA 142/14	150 DA 632	

SA CATEGORY I ILS - SPECIAL AIRCREW & AIRCRAFT CERTIFICATION REQUIRED