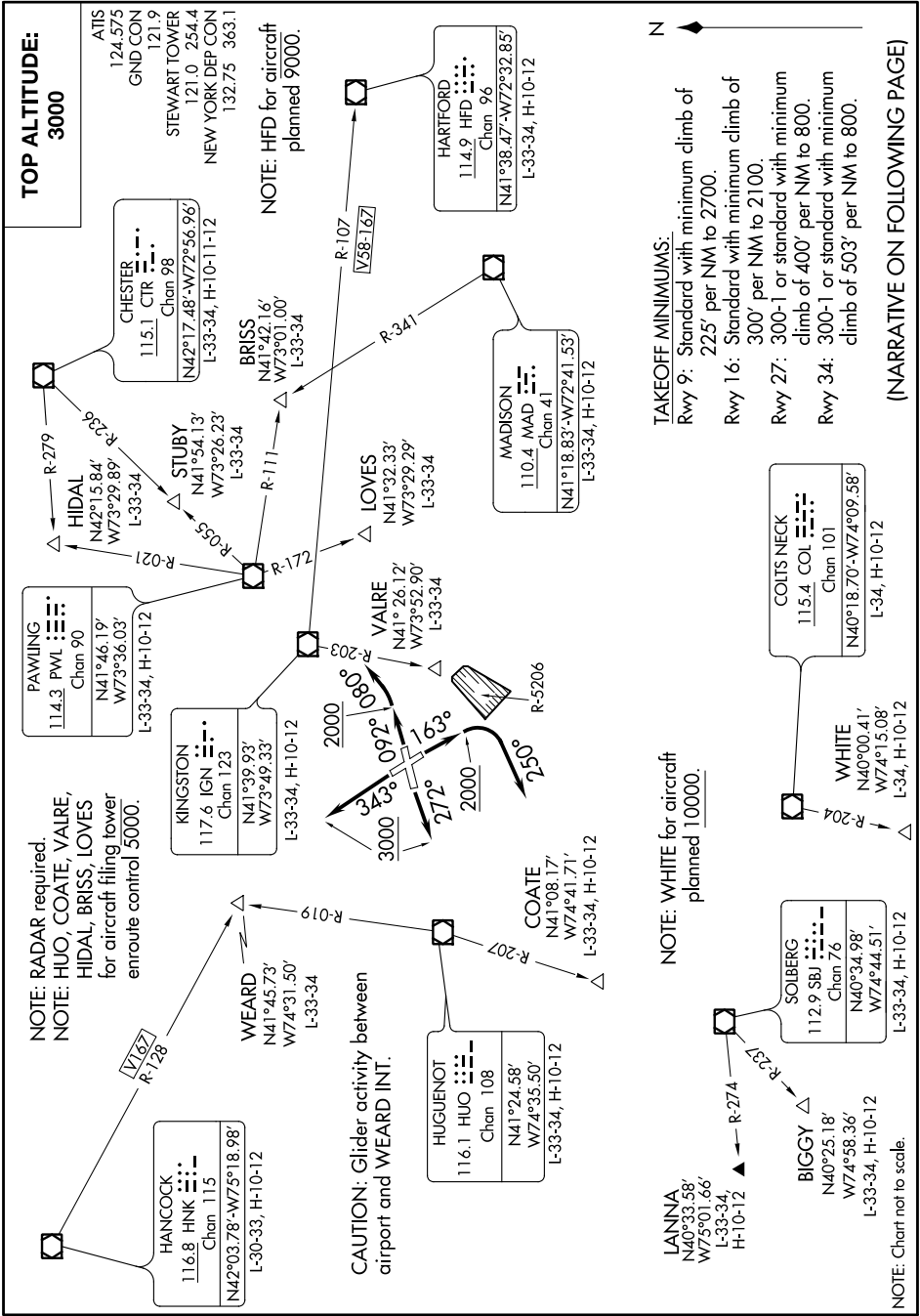


# STEWART NINE DEPARTURE

AL-450 (FAA)

NEW YORK STEWART INTL (SWF)  
NEW YORK, NEW YORK

NE-2, 04 NOV 2021 to 02 DEC 2021



# STEWART NINE DEPARTURE

NE-2, 04 NOV 2021 to 02 DEC 2021

(NARRATIVE ON FOLLOWING PAGE)



### TAKEOFF MINIMUMS:

- Rwy 9: Standard with minimum climb of 225' per NM to 2700.
- Rwy 16: Standard with minimum climb of 300' per NM to 2100.
- Rwy 27: 300-1 or standard with minimum climb of 400' per NM to 800.
- Rwy 34: 300-1 or standard with minimum climb of 503' per NM to 800.

NOTE: WHITE for aircraft planned 10000.

NOTE: HFD for aircraft planned 9000.

NOTE: RADAR required.  
NOTE: HUIO, COATE, VAIRE, HIDAL, BRISS, LOVES for aircraft filing tower enroute control 5000.

CAUTION: Glider activity between airport and WEARD INT.

NOTE: Chart not to scale.

TOP ALTITUDE:  
3000

ATIS  
124.575  
GND CON  
121.9  
STEWART TOWER  
121.0 254.4  
NEW YORK DEP CON  
132.75 363.1

CHESTER  
115.1 CTR  
Chan 98  
N42°17.48'-W72°56.96'  
L-33-34, H-10-11-12

BRISS  
N41°42.16'  
W73°01.00'  
L-33-34

HARTFORD  
114.9 HFD  
Chan 96  
N41°38.47'-W72°32.85'  
L-33-34, H-10-12

MADISON  
110.4 MAD  
Chan 41  
N41°18.83'-W72°41.53'  
L-33-34, H-10-12

LOVES  
N41°32.33'  
W73°29.29'  
L-33-34

PAWING  
114.3 PWL  
Chan 90  
N41°46.19'  
W73°36.03'  
L-33-34, H-10-12

KINGSTON  
117.6 IGN  
Chan 123  
N41°39.93'  
W73°49.33'  
L-33-34, H-10-12

VAIRE  
N41°26.12'  
W73°52.90'  
L-33-34

COITS NECK  
115.4 COL  
Chan 101  
N40°18.70'-W74°09.58'  
L-34, H-10-12

WHITE  
N40°00.41'  
W74°15.08'  
L-34, H-10-12

SOLBERG  
112.9 SBI  
Chan 76  
N40°34.98'  
W74°44.51'  
L-33-34, H-10-12

BIGGY  
N40°25.18'  
W74°58.36'  
L-33-34, H-10-12

WEARD  
N41°45.73'  
W74°31.50'  
L-33-34

HUGUENOT  
116.1 HUIO  
Chan 108  
N41°24.58'  
W74°35.50'  
L-33-34, H-10-12

COATE  
N41°08.17'  
W74°41.71'  
L-33-34, H-10-12

HANCOCK  
116.8 HNK  
Chan 115  
N42°03.78'-W75°18.98'  
L-30-33, H-10-12

LAINA  
N40°33.58'  
W75°01.66'  
L-33-34, H-10-12