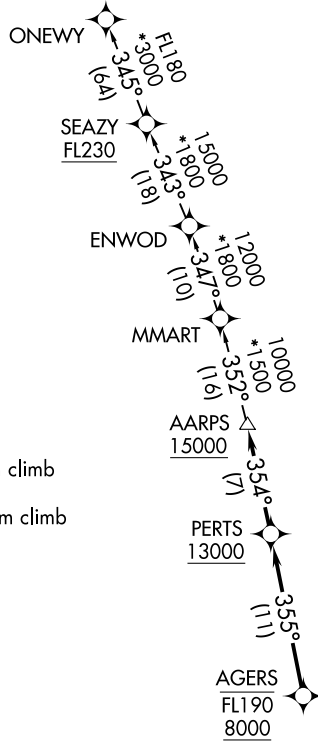


AARPS ONE DEPARTURE (RNAV)

ATIS ★
 132.275 269.9
 CLNC DEL
 121.75 275.8
 GND CON
 121.75 275.8
 HOMESTEAD TOWER
 133.45 279.55
 MIAMI DEP CON
 125.5 354.1

**TOP ALTITUDE:
 ASSIGNED BY ATC**

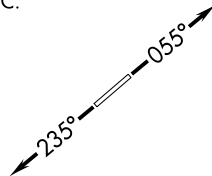


TAKEOFF MINIMUMS

Rwy 6: Standard with minimum climb of 500' per NM to 1800.
 Rwy 24: Standard with minimum climb of 500' per NM to 2200.

- NOTE: RNAV 1.
- NOTE: RADAR required.
- NOTE: Jet aircraft only.
- NOTE: DME/DME/IRU or GPS required.
- NOTE: Accelerate to 250K, if unable, advise ATC.

NOTE: Chart not to scale.



DEPARTURE ROUTE DESCRIPTION

TAKEOFF RUNWAY 6: Climb on heading 055° or as assigned for RADAR vectors to cross AGERS between 8000 and FL190. Thence. . .

TAKEOFF RUNWAY 24: Climb on heading 235° or as assigned for RADAR vectors to cross AGERS between 8000 and FL190. Thence. . .

. . .on track 355° to cross PERTS at or above 13000, then on track 354° to cross AARPS at or above 15000. Then on transition. Maintain ATC assigned altitude, expect clearance to filed altitude within 10 minutes after departure.

ONEWY TRANSITION (AARPS1.ONEWY)

AARPS ONE DEPARTURE (RNAV)

SE-3, 04 NOV 2021 to 02 DEC 2021

SE-3, 04 NOV 2021 to 02 DEC 2021