

(FOLZZ1.FOLZZ) 21224

AL-494 (FAA)

HOMESTEAD ARB (KHST)  
HOMESTEAD, FLORIDA

# FOLZZ ONE DEPARTURE (RNAV)

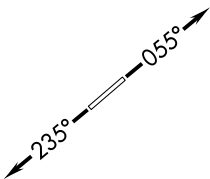
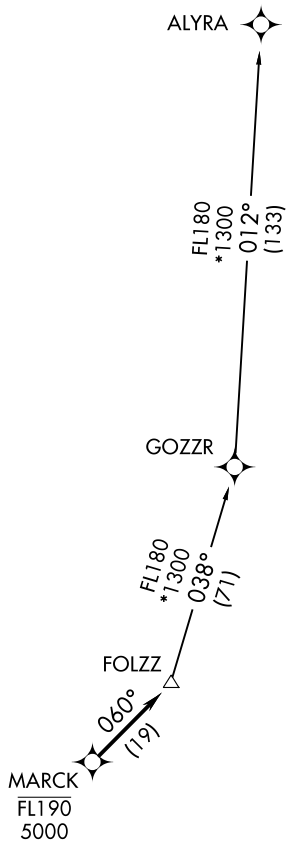
**TOP ALTITUDE:  
ASSIGNED BY ATC**

ATIS ★  
132.275 269.9  
CLNC DEL  
121.75 275.8  
GND CON  
121.75 275.8  
HOMESTEAD TOWER  
133.45 279.55  
MIAMI DEP CON  
125.5 354.1

TAKEOFF MINIMUMS:

Rwy 6: Standard with minimum climb of 500' per NM to 1800.  
Rwy 24: Standard with minimum climb of 500' per NM to 2200.

- NOTE: RNAV 1.
- NOTE: RADAR required.
- NOTE: Jet aircraft only.
- NOTE: DME/DME/IRU or GPS required.
- NOTE: Accelerate to 250K, if unable, advise ATC.



NOTE: Chart not to scale.

## DEPARTURE ROUTE DESCRIPTION

TAKEOFF RUNWAY 6: Climb on heading 055° or as assigned for RADAR vectors to cross MARCK between 5000 and FL190, thence. . . .

TAKEOFF RUNWAY 24: Climb on heading 235° or as assigned for RADAR vectors to cross MARCK between 5000 and FL190, thence. . . .

. . . . on track 060° to FOLZZ, then on transition. Maintain ATC assigned altitude, expect clearance to filed altitude within 10 minutes after departure.

ALYRA TRANSITION (FOLZZ1.ALYRA)

FOLZZ ONE DEPARTURE (RNAV)  
(FOLZZ1.FOLZZ) 12AUG21

HOMESTEAD, FLORIDA  
HOMESTEAD ARB (KHST)

SE-3, 04 NOV 2021 to 02 DEC 2021

SE-3, 04 NOV 2021 to 02 DEC 2021