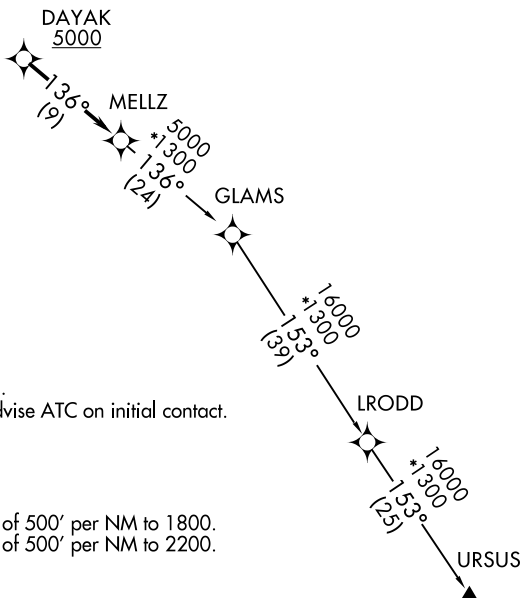
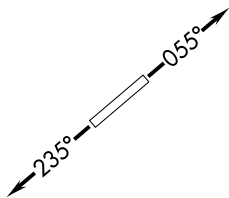


# MELLZ ONE DEPARTURE (RNAV)

**TOP ALTITUDE:  
ASSIGNED BY ATC**

- ATIS★
- 132.275 269.9
- CLNC DEL
- 121.75 275.8
- GND CON
- 121.75 275.8
- HOMESTEAD TOWER
- 133.45 279.55
- MIAMI DEP CON
- 125.5 354.1



- NOTE: RNAV 1.
- NOTE: RADAR required..
- NOTE: DME/DME/IRU or GPS required.
- NOTE: If unable to accept climb rate, advise ATC on initial contact.

### TAKEOFF MINIMUMS

- Rwy 6: Standard with minimum climb of 500' per NM to 1800.
- Rwy 24: Standard with minimum climb of 500' per NM to 2200.

NOTE: Chart not to scale.

### DEPARTURE ROUTE DESCRIPTION

**TAKEOFF RUNWAY 6:** Climb on heading 055° or as assigned for RADAR vectors to cross DAYAK at or above 5000 thence....

**TAKEOFF RUNWAY 24:** Climb on heading 235° or as assigned for RADAR vectors to cross DAYAK at or above 5000 thence....

....on track 136° to MELLZ, then on assigned transition. Maintain ATC assigned altitude, expect clearance to filed altitude within 10 minutes after departure.

GLAMS TRANSITION (MELLZ1 .GLAMS)

URSUS TRANSITION (MELLZ1 .URSUS)

# MELLZ ONE DEPARTURE (RNAV)