

MHTO ONE DEPARTURE (RNAV)

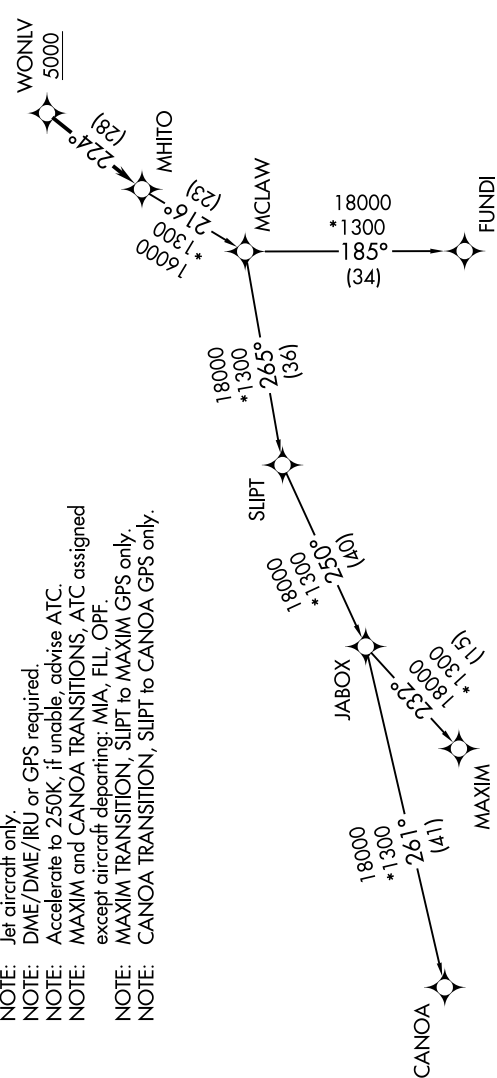
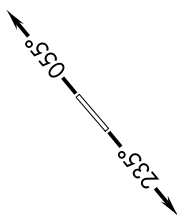
**TOP ALTITUDE:
ASSIGNED BY ATC**

TAKEOFF MINIMUMS

Rwy 6: Standard with minimum climb of 500' per NM to 1800.
Rwy 24: Standard with minimum climb of 500' per NM to 2200.

ATIS * 132.275 269.9
CLNC DEL 121.75 275.8
GND CON 121.75 275.8
HOMESTEAD TOWER 133.45 279.55
MIAMI DEP CON 123.5 354.1

- NOTE: RNAV 1.
- NOTE: RADAR required.
- NOTE: Jet aircraft only.
- NOTE: DME/DME/IRU or GPS required.
- NOTE: Accelerate to 250K, if unable, advise ATC.
- NOTE: MAXIM and CANOA TRANSITIONS, ATC assigned except aircraft departing: MIA, FLL, OPF.
- NOTE: MAXIM TRANSITION, SLIPT to MAXIM GPS only.
- NOTE: CANOA TRANSITION, SLIPT to CANOA GPS only.



(NARRATIVE ON FOLLOWING PAGE)

NOTE: Chart not to scale.