

# TACAN Z RWY 6

TACAN HST Chan <b>19</b>	APCH CRS <b>056°</b>	Rwy ldg <b>11,201</b> TDZE Arprt Elev <b>5</b> <b>6</b>
-----------------------------	-------------------------	---

AL-494 [USAF]

HOMESTEAD ARB (KHST)

▼ \* When ALS inop, increase CAT AB RVR to 55, vis to 1 mile; CAT CDE vis to 1½ miles.  
\*\* Circling NA NW of Rwy 6-24.

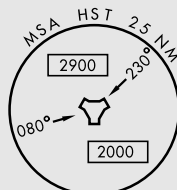
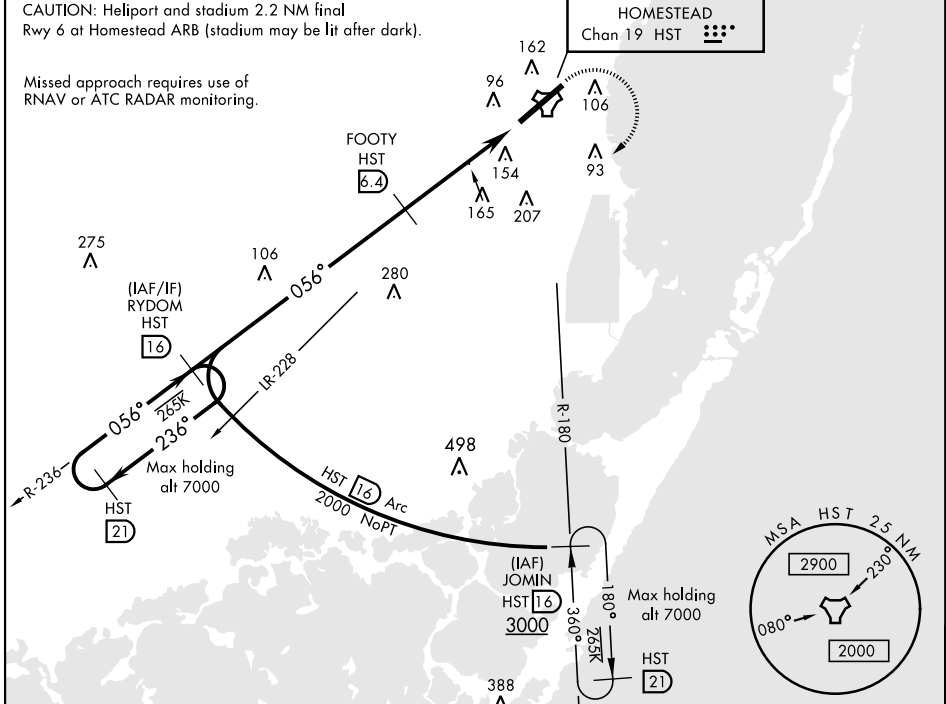


MISSED APPROACH: Climb to 800 then climbing right turn to 3000 intercept HST TACAN R-180 to JOMIN and hold.

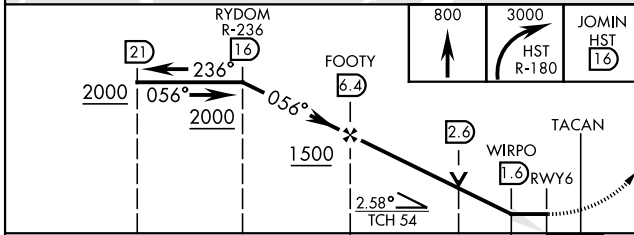
ATIS ★ <b>132.275 269.9</b>	HOMESTEAD APP CON <b>123.8 257.675</b>	HOMESTEAD TOWER <b>133.45 279.55</b>	GND CON <b>121.75 275.8</b>	CLNC DEL <b>121.75 275.8</b>
--------------------------------	---	---	--------------------------------	---------------------------------

CAUTION: Heliport and stadium 2.2 NM final Rwy 6 at Homestead ARB (stadium may be lit after dark).

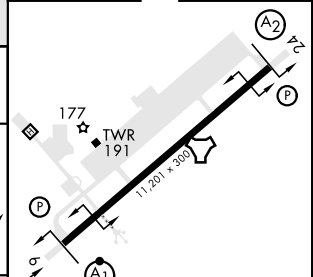
Missed approach requires use of RNAV or ATC RADAR monitoring.



EMERG SAFE ALT 100 NM 15,100



ELEV 6	TDZE 5
--------	--------



CATEGORY	A	B	C	D	E
S-6 *	460/24	455 (500-½)	460/45	455 (500-¾)	
** CIRCLING	460-1 454 (500-1)	500-1 494 (500-1)	520-1½ 514 (600-1½)	580-2 574 (600-2)	780-2¾ 774 (800-2¾)

056° to TACAN  
HIRL Rwy 6-24

# TACAN Z RWY 6

SE-3, 04 NOV 2021 to 02 DEC 2021

SE-3, 04 NOV 2021 to 02 DEC 2021