

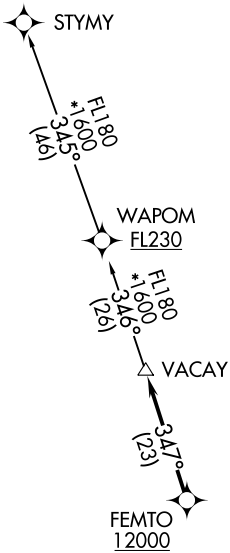
(VACAY1.VACAY) 21224  
**VACAY ONE DEPARTURE (RNAV)**

AL-494 (FAA)

**HOMESTEAD ARB (KHST)**  
 HOMESTEAD, FLORIDA

**TOP ALTITUDE:  
 ASSIGNED BY ATC**

ATIS\*  
 132.275 269.9  
 CLNC DEL  
 121.75 275.8  
 GND CON  
 121.75 275.8  
 HOMESTEAD TOWER  
 133.45 279.55  
 MIAMI DEP CON  
 125.5 354.1



- NOTE: RNAV 1.
- NOTE: RADAR required.
- NOTE: Jet aircraft only.
- NOTE: DME/DME/IRU or GPS required.
- NOTE: Accelerate to 250K, if unable, advise ATC.
- NOTE: WAPOM transition ATC assigned except aircraft landing: MCO, DAB, and MLB terminal areas.

TAKEOFF MINIMUMS

- Rwy 6: Standard with minimum climb of 500' per NM to 1800.
- Rwy 24: Standard with minimum climb of 500' per NM to 2200.

NOTE: Chart not to scale.

**DEPARTURE ROUTE DESCRIPTION**

TAKEOFF RUNWAY 6: Climb on heading 055° or as assigned for RADAR vectors to cross FEMTO at or above 12000, thence. . . .

TAKEOFF RUNWAY 24: Climb on heading 235° or as assigned for RADAR vectors to cross FEMTO at or above 12000, thence. . . .

. . . .on track 347° to VACAY, then on assigned transition, maintain ATC assigned altitude, expect clearance to filed altitude 10 minutes after departure.

- STYMY TRANSITION (VACAY1.STYMY)
- WAPOM TRANSITION (VACAY1.WAPOM)

**VACAY ONE DEPARTURE (RNAV)**  
 (VACAY1.VACAY) 12AUG21

HOMESTEAD, FLORIDA  
**HOMESTEAD ARB (KHST)**

SE-3, 04 NOV 2021 to 02 DEC 2021

SE-3, 04 NOV 2021 to 02 DEC 2021