

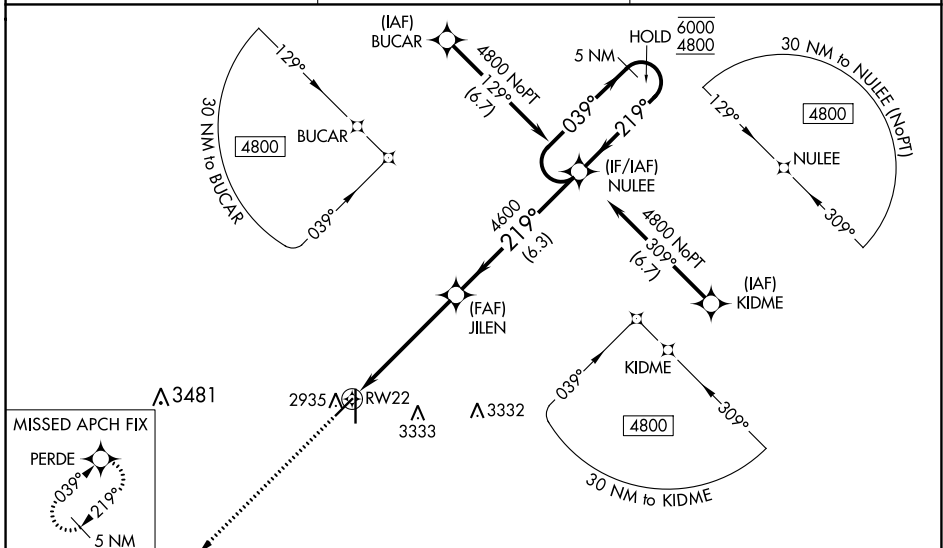
WAAS CH 90405 W22A	APP CRS 219°	Rwy Idg TDZE 2880 Apt Elev 2886
--	------------------------	---

RNAV (GPS) RWY 22

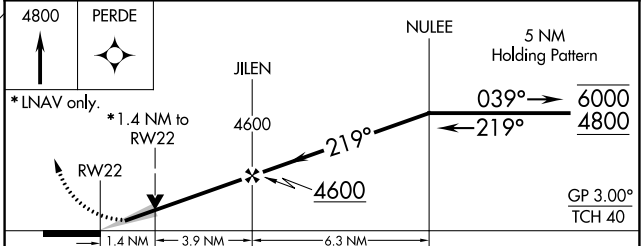
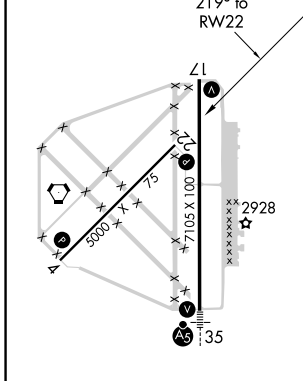
LIBERAL MID-AMERICA RGNL (L.B.L.)

RNP APCH.	<p>⚠ Circling NA east of Rwy 17-35. Baro-VNAV NA when using Guymon Muni altimeter setting. For uncompensated Baro-VNAV systems, LNAV/VNAV NA below -20°C or above 54°C. VDP NA when using Guymon Muni altimeter setting. When local altimeter setting not received, use Guymon Muni altimeter setting: increase all DA 112 feet and all MDA 120 feet. Increase LPV all Cats visibilities 1/4 SM; increase LNAV/VNAV all Cats visibility 3/8 SM; increase LNAV Cats C and D visibility 3/8 SM; Circling Cat C and D visibility 1/4 SM.</p>	MISSED APPROACH: Climb to 4800 direct PERDE and hold.
-----------	--	---

AWOS-3PT 118.375	KANSAS CITY CENTER 134.0 257.865	UNICOM 122.8 (CTAF)
----------------------------	--	-------------------------------



ELEV 2886	D	TDZE 2880
-----------	----------	-----------



CATEGORY	A	B	C	D
LPV DA		3080-3/4	200 (200-3/4)	
LNAV/VNAV DA		3168-7/8	288 (300-7/8)	
LNAV MDA	3360-1	480 (500-1)	3360-1 3/8	480 (500-1 3/8)
C CIRCLING	3360-1 474 (500-1)	3360-1 1/8 474 (500-1 1/8)	3360-1 1/2 474 (500-1 1/2)	3440-2 554 (600-2)

REIL Rwy 4, 17 and 22 **Ⓛ**
MIRL Rwy 4-22 **Ⓛ**
HIRL Rwy 17-35 **Ⓛ**

NC-2, 04 NOV 2021 to 02 DEC 2021

NC-2, 04 NOV 2021 to 02 DEC 2021