

WAAS CH 63005 W35A	APP CRS 354°	Rwy Idg TDZE Apt Elev	7101 2875 2886
--	------------------------	-----------------------------	---

RNAV (GPS) RWY 35

LIBERAL MID-AMERICA RGNL (L.B.L.)

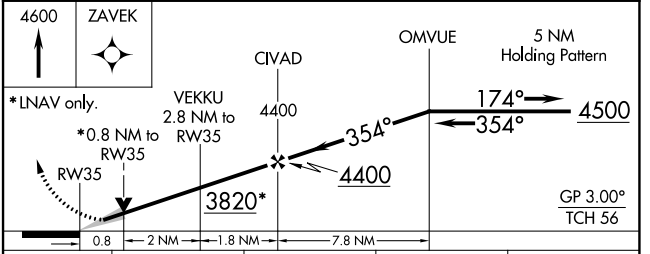
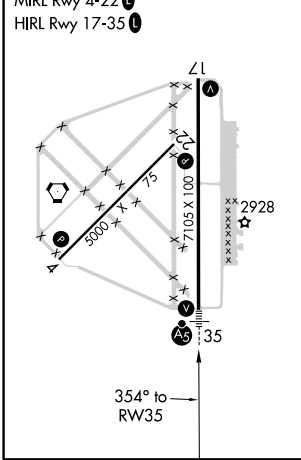
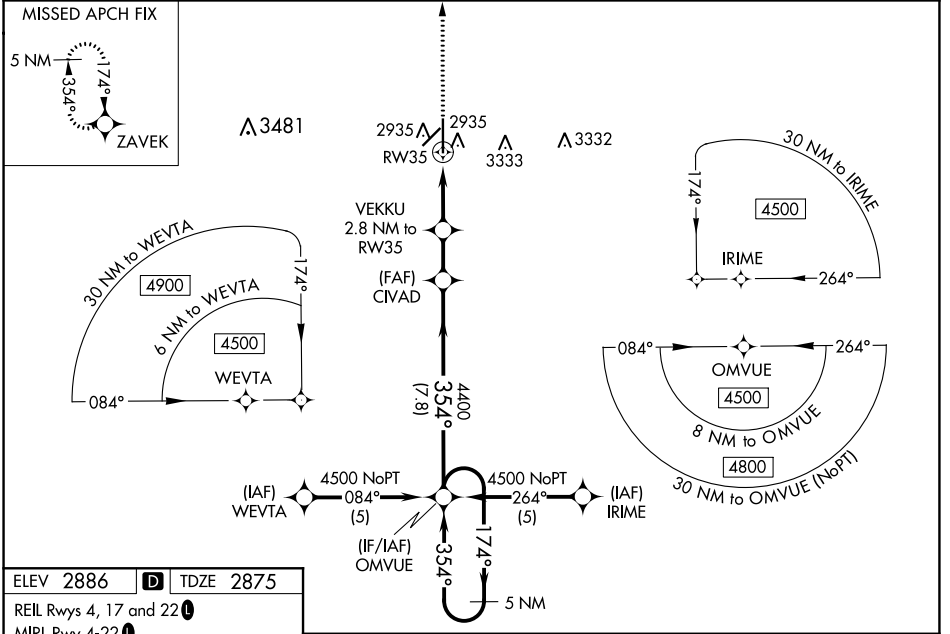
⚠ Baro-VNAV NA when using Guymon Muni altimeter setting. For uncompensated Baro-VNAV systems, LNAV/VNAV NA below -20°C (-4°F) or above 52°C (125°F). Circling NA east of Rwy 17-35. DME/DME RNP-0.3 NA. VDP NA when using Guymon Muni altimeter setting. When local altimeter setting not received, use Guymon Muni altimeter setting: Increase all DA 112 feet and all MDA 120 feet, increase LNAV Cats C and D visibility 3/8 mile; Circling Cat D visibility 1/4 mile.

MALSR



MISSED APPROACH: Climb to 4600 direct ZAVEK and hold.

AWOS-3PT 118.375	KANSAS CITY CENTER 134.0 257.865	UNICOM 122.8 (CTAF) 0
-----------------------------------	---	--



CATEGORY	A	B	C	D
LPV DA		3075-1/2	200 (200-1/2)	
LNAV/VNAV DA		3125-1/2	250 (300-1/2)	
LNAV MDA		3200-1/2	325 (400-1/2)	
C CIRCLING	3260-1 374 (400-1)	3340-1 454 (500-1)	3340-1 1/2 454 (500-1 1/2)	3440-2 554 (600-2)

NC-2, 04 NOV 2021 to 02 DEC 2021

NC-2, 04 NOV 2021 to 02 DEC 2021