

VORTAC LBL 112.3 Chan 70	APP CRS 019°	Rwy Idg TDZE 2885 Apt Elev 2886
--	------------------------	---

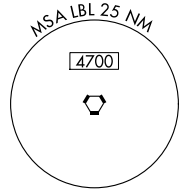
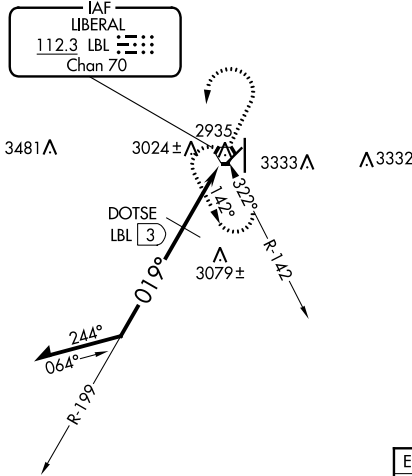
VOR RWY 4
LIBERAL MID-AMERICA RGNL (L.B.L)

⚠ Circling NA east of Rwy 17-35. When local altimeter setting not received, use Guymon altimeter setting and increase all MDA 120 feet, increase Circling Cat D visibility ¼ SM. Visibility reduction by helicopters NA. VDP NA when using Guymon Muni altimeter setting.

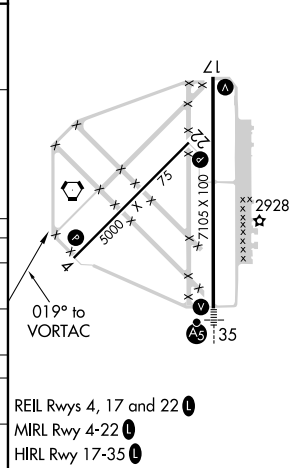
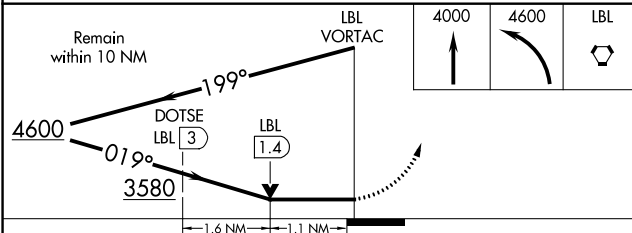
MISSED APPROACH: Climb to 4000 then climbing left turn to 4600 direct LBL VORTAC and hold.

AWOS-3PT 118.375	KANSAS CITY CENTER 134.0 257.865	UNICOM 122.8 (CTAF) 0
----------------------------	--	---------------------------------

Λ 3502



ELEV 2886	D TDZE 2885
-----------	--------------------



CATEGORY	A	B	C	D
S-4	3580-1 695 (700-1)		3580-2 695 (700-2)	3580-2¼ 695 (700-2¼)
C CIRCLING	3580-1 694 (700-1)		3580-2 694 (700-2)	3580-2¼ 694 (700-2¼)
DME MINIMUMS				
S-4	3280-1 395 (400-1)			3280-1¼ 395 (400-1¼)
C CIRCLING	3340-1 454 (500-1)		3340-1½ 454 (500-1½)	3440-2 554 (600-2)

REIL Rws 4, 17 and 22 **0**
MIRL Rwy 4-22 **0**
HIRL Rwy 17-35 **0**

NC-2, 04 NOV 2021 to 02 DEC 2021

NC-2, 04 NOV 2021 to 02 DEC 2021