

RNAV (RNP) Y RWY 31L

PALM SPRINGS INTL (PSP)

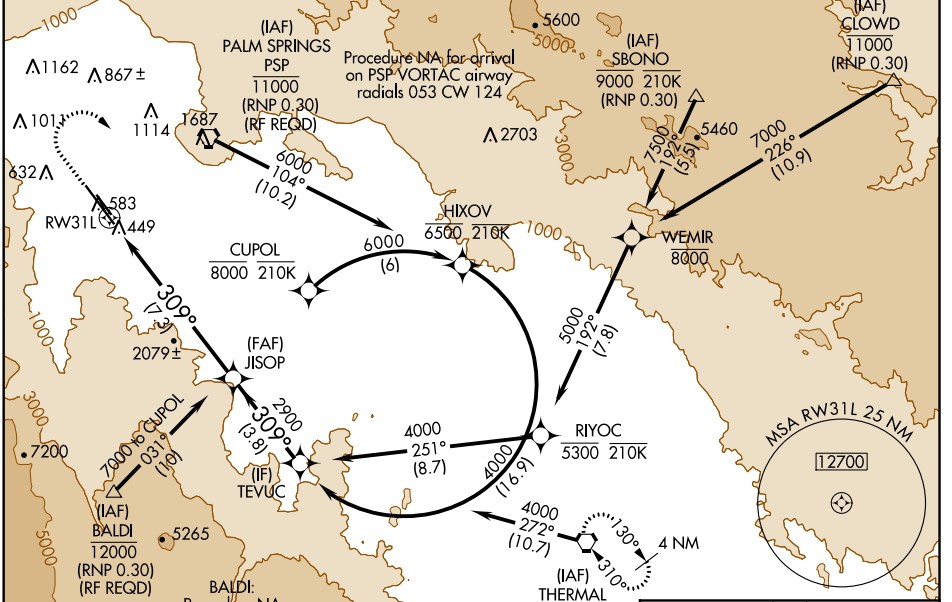
APP CRS	Rwy Idg	8500
309°	TDZE	430
	Apt Elev	477

RNP AR APCH.

⚠ Missed approach requires minimum climb of 340' per NM to 3000. For uncompensated Baro-VNAV systems, procedure NA below 2°C or above 54°C.

⚠ MISSED APPROACH: Climb to 1800, then climbing right turn to 4000 direct TRM VORTAC and hold.

ATIS	SOCAL APP CON *	PALM SPRINGS TOWER *	GND CON	CLNC DEL	UNICOM
124.65	126.7 370.95 135.275 251.1	119.7 (CTAF) 0 377.05	121.9	128.35	122.95



SW-3, 04 NOV 2021 to 02 DEC 2021

SW-3, 04 NOV 2021 to 02 DEC 2021

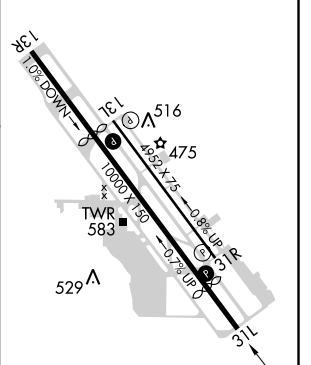
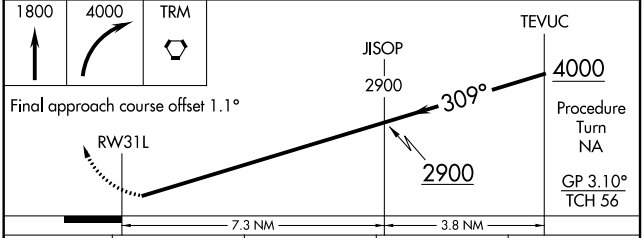
ELEV	477	D	TDZE	430
------	------------	----------	------	------------

Procedure NA for arrival on TRM VORTAC airway radials 203 CW 078.

Procedure NA for arrival on PSP-VORTAC airway radials 053 CW 124.

Procedure NA for arrival on TRM VORTAC airway radials 053 CW 124.

Procedure NA for arrival on TRM VORTAC airway radials 053 CW 124.



CATEGORY	A	B	C	D
RNP 0.30 DA	734-1 304 (300-1)			

AUTHORIZATION REQUIRED

HIRL Rwy 13R-31L
MIRL Rwy 13L-31R
REL Rwy 13R and 31L
REL Rwy 13L and 31R