

CHINS FOUR ARRIVAL

NW-1, 04 NOV 2021 to 02 DEC 2021

SEATTLE APP CON
123.9 338.2

BFI ATIS
127.75

PAE ATIS
128.65

RNT ATIS
126.95

SEA D-ATIS
118.0

NOTE: DME and RADAR required.
NOTE: Landing north/landing south restrictions
are issued per the KSEA flow.

SNOHOMISH COUNTY
(PAINE FLD)

BOEING FLD/
KING COUNTY INTL

RENTON MUNI

SEATTLE-TACOMA
INTL

SEATTLE
116.8 SEA
Chan 115
N47°26.12'-W122°18.58'

AUBRN
N47°21.71'-W122°08.76'
TURBOJET:
Landing South: 12000 250K
Maintain 12000.

HUMPP
N47°12.56'
W121°48.61'
TURBOJET:
Landing South: 15000

RADDY
N47°04.47'-W121°30.97'
PROP/TURBOPROP:
10000 250K
Maintain 10000.

TURBOJET:
Landing North: 12000 250K
Maintain 12000.
Landing South: 16000 270K
Landing BFI Rwy 32L/R: 11000 250K
Maintain 11000.

YAKIMA
116.0 YKM
Chan 107
N46°34.21'
W120°26.68'

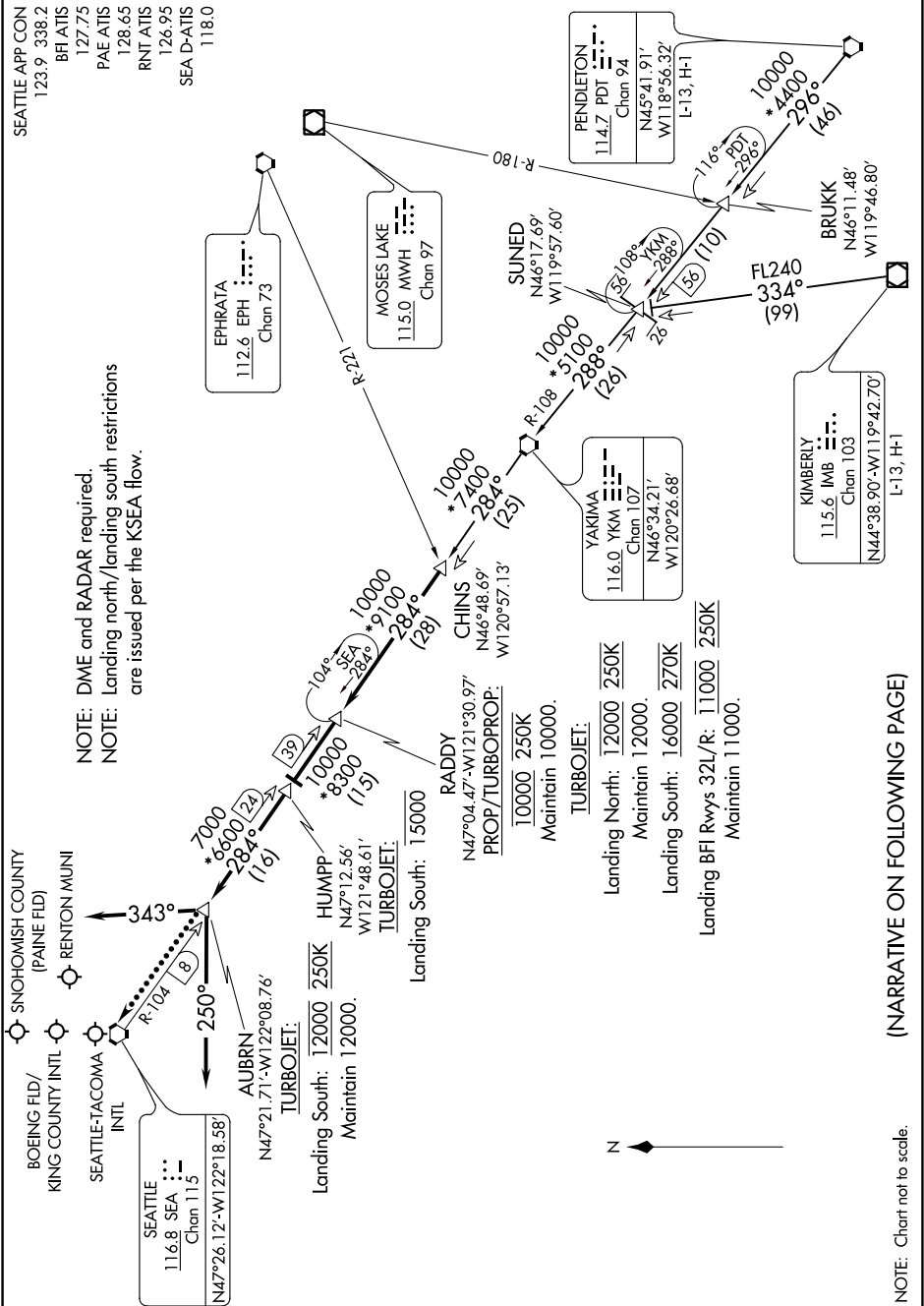
KIMBERLY
115.6 KMB
Chan 103
N44°38.90'-W119°42.70'
L-13; H-1

BRUKK
N46°11.48'
W119°46.80'

PENDELTON
114.7 PDT
Chan 94
N45°41.91'
W118°56.32'
L-13; H-1

MOSES LAKE
115.0 MLW
Chan 97

EPHRATA
112.6 EPH
Chan 73



(NARRATIVE ON FOLLOWING PAGE)

NOTE: Chart not to scale.

NW-1, 04 NOV 2021 to 02 DEC 2021