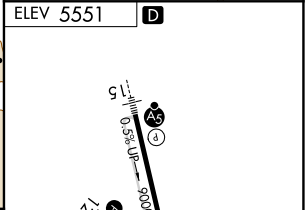
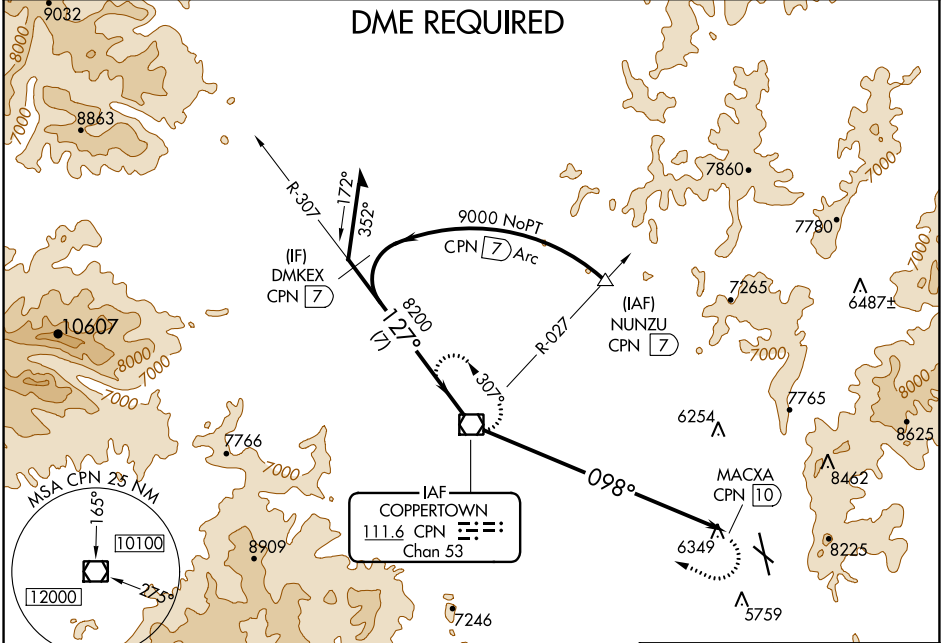


VOR/DME CPN 111.6 Chan 53	APP CRS 098°	Rwy Idg TDZE Apt Elev N/A N/A 5551
---	------------------------	--

VOR-A
BERT MOONEY (BTM)

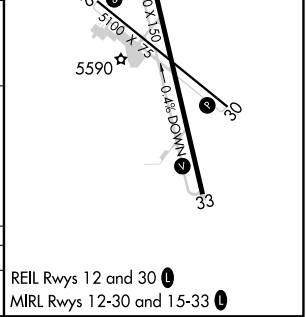
DME required. Circling NA northeast of Rwy 15-33.	MISSED APPROACH: Climbing right turn to 9300 direct CPN VOR/DME and hold.
--	--

ASOS 135.175	SALT LAKE CENTER 132.4 338.3	UNICOM 123.0(CTAF)
------------------------	--	------------------------------



	CPN VOR/DME	9300 CPN
10200	307°	
8200	127°	
	098°	
	MACXA CPN 10	
	10 NM	

CATEGORY	A	B	C	D
CIRCLING	7120-1¼ 1569 (1600-1¼)	7120-1½ 1569 (1600-1½)	7120-3 1569 (1600-3)	7140-3 1589 (1600-3)



NW-1, 04 NOV 2021 to 02 DEC 2021

NW-1, 04 NOV 2021 to 02 DEC 2021