

APP CRS	Rwy Idg	2864
172°	TDZE	6
	Apt Elev	7

RNAV (GPS) RWY 18

ALBERT WHITTED (SPG)

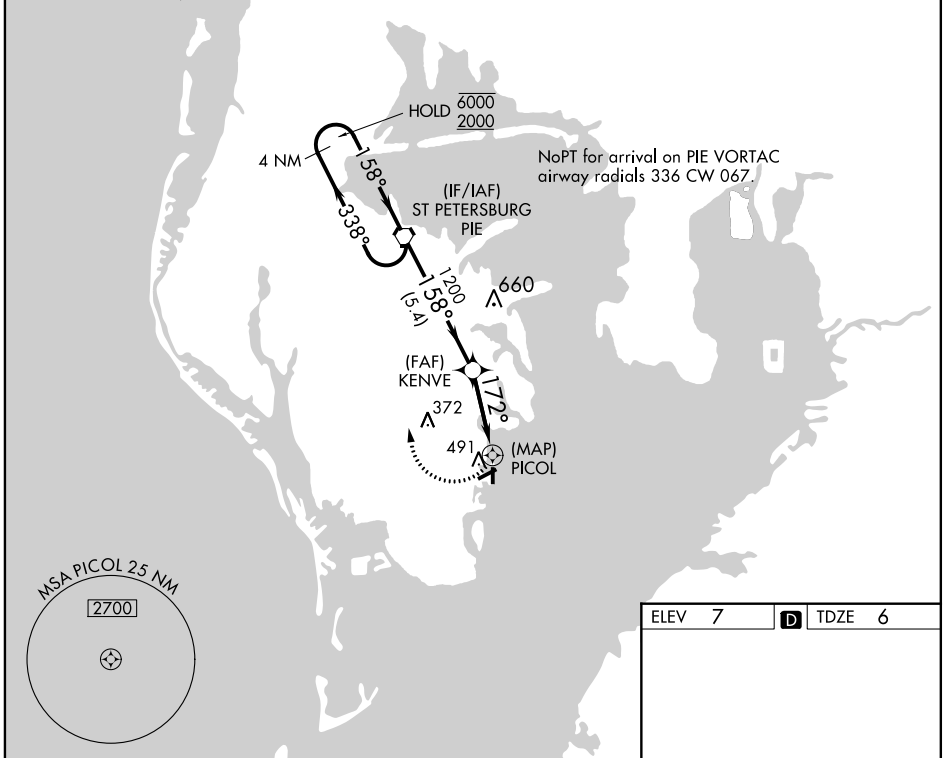
RNP APCH.

▼ Circling Rwy 36 NA at night. Rwy 18 helicopter visibility reduction below 3/4 SM NA.

▲

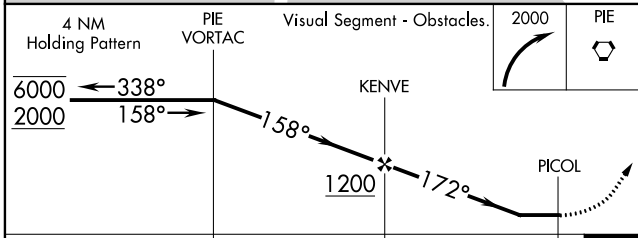
MISSED APPROACH: Climbing right turn to 2000 direct PIE VORTAC and hold.

ASOS 118.875	TAMPA APP CON 119.65 316.05 (EAST) 125.3 316.05 (WEST)	ALBERT WHITTED TOWER ★ 127.4 (CTAF) 257.6	GND CON 121.8	UNICOM 122.95
------------------------	--	---	-------------------------	-------------------------

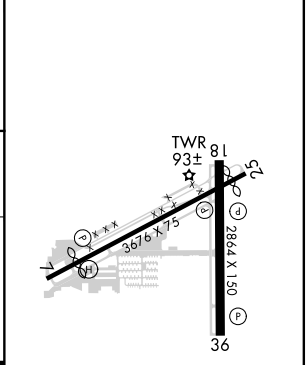


SE-3, 04 NOV 2021 to 02 DEC 2021

SE-3, 04 NOV 2021 to 02 DEC 2021



ELEV	7	D	TDZE	6
------	----------	----------	------	----------



CATEGORY	A	B	C	D
LNVA MDA	800-1 794 (800-1)	800-1¼ 794 (800-1¼)	NA	
☐ CIRCLING	860-1¼	853 (900-1¼)	NA	

MIRL Rws 7-25 and 18-36 **Ⓛ**
REIL Rws 7, 18, 25 and 36 **Ⓛ**