

BHHIA ONE ARRIVAL(RNAV) Transition Routes

FORT LAUDERDALE, FLORIDA

MIAMI APP CON  
120.5 350.225  
FLL D-ATIS  
135.0  
FXE ATIS  
119.85  
OPF ATIS  
125.9  
PMP ATIS  
120.55

RNAV 1-DME/DME/IRU or GPS.  
CANOA TRANSITION, RNP 1-GPS.  
MAXIM TRANSITION, RNP 1-GPS.  
IKBIX TRANSITION, RNP 1-GPS.  
RADAR required.

See following page  
for Arrival Routes.

BHHIA  
7000  
KERRA  
7000

CANOA TRANSITION (CANOA.BHHIA1)  
FILCH TRANSITION (FILCH.BHHIA1)  
HULKY TRANSITION (HULKY.BHHIA1)  
IKBIX TRANSITION (IKBIX.BHHIA1)  
MAXIM TRANSITION (MAXIM.BHHIA1)  
PYREX TRANSITION (PYREX.BHHIA1)

NOTE: Expect "descend via" clearance and landing direction (east or west) by ARTCC. For vertical navigation planning, FLL landing east, select Rwy 10R, FLL landing west, select Rwy 28R.

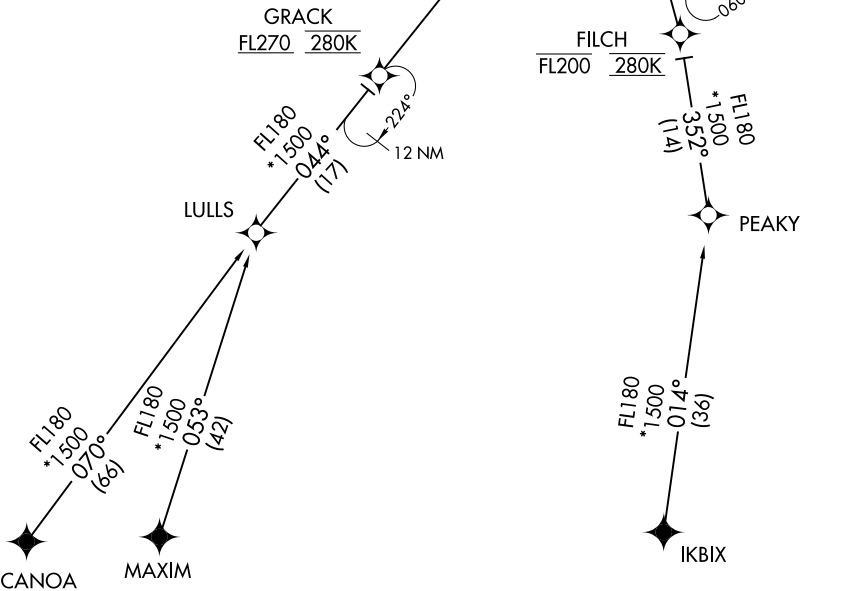
NOTE: MIA approach will issue landing runway.

NOTE: Descend via MACH number until intercepting 280K. Maintain 280K until slowed by the STAR or assigned by ATC.

NOTE: FILCH and HULKY TRANSITIONS, ATC assigned only.

NOTE: PYREX TRANSITION, for EYW area airports only.

NOTE: Jet aircraft only.



(CONTINUED ON FOLLOWING PAGE)

NOTE: Chart not to scale.

SE-3, 04 NOV 2021 to 02 DEC 2021

SE-3, 04 NOV 2021 to 02 DEC 2021