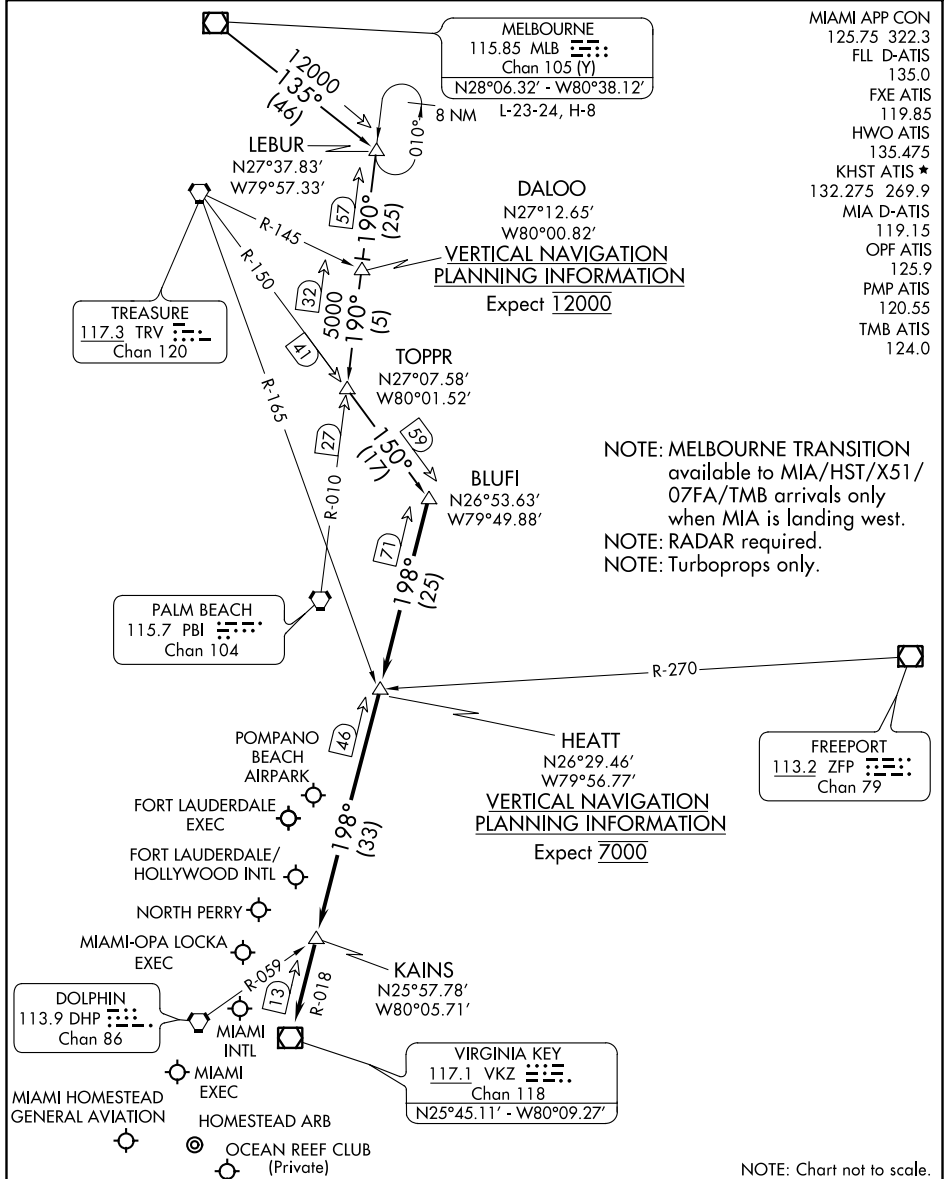


BLUF1 FOUR ARRIVAL

FORT LAUDERDALE, FLORIDA



- MIAMI APP CON 125.75 322.3
- FLL D-ATIS 135.0
- FXE ATIS 119.85
- HWO ATIS 135.475
- KHST ATIS ★ 132.275 269.9
- MIA D-ATIS 119.15
- OPF ATIS 125.9
- PMP ATIS 120.55
- TMB ATIS 124.0

NOTE: MELBOURNE TRANSITION available to MIA/HST/X51/07FA/TMB arrivals only when MIA is landing west.
 NOTE: RADAR required.
 NOTE: Turboprops only.

VERTICAL NAVIGATION PLANNING INFORMATION
 Expect 7000

VERTICAL NAVIGATION PLANNING INFORMATION
 Expect 12000

NOTE: Chart not to scale.

MELBOURNE TRANSITION (MLB.BLUF14): From over MLB VOR/DME on MLB R-135 to LEBUR INT/MLB 46 DME, then on PBI R-010 to TOPPR INT/PBI 30 DME, then on TRV R-150 to BLUFI INT. Thence . . .
 . . . from over BLUFI INT/VKZ 71 DME on VKZ R-018 to HEATT INT/VKZ 46 DME, then on VKZ R-018 to KAINS INT, then on VKZ R-018 to VKZ VOR/DME. Expect RADAR vectors to final approach course after KAINS INT.

BLUF1 FOUR ARRIVAL

FORT LAUDERDALE, FLORIDA

SE-3, 04 NOV 2021 to 02 DEC 2021

SE-3, 04 NOV 2021 to 02 DEC 2021