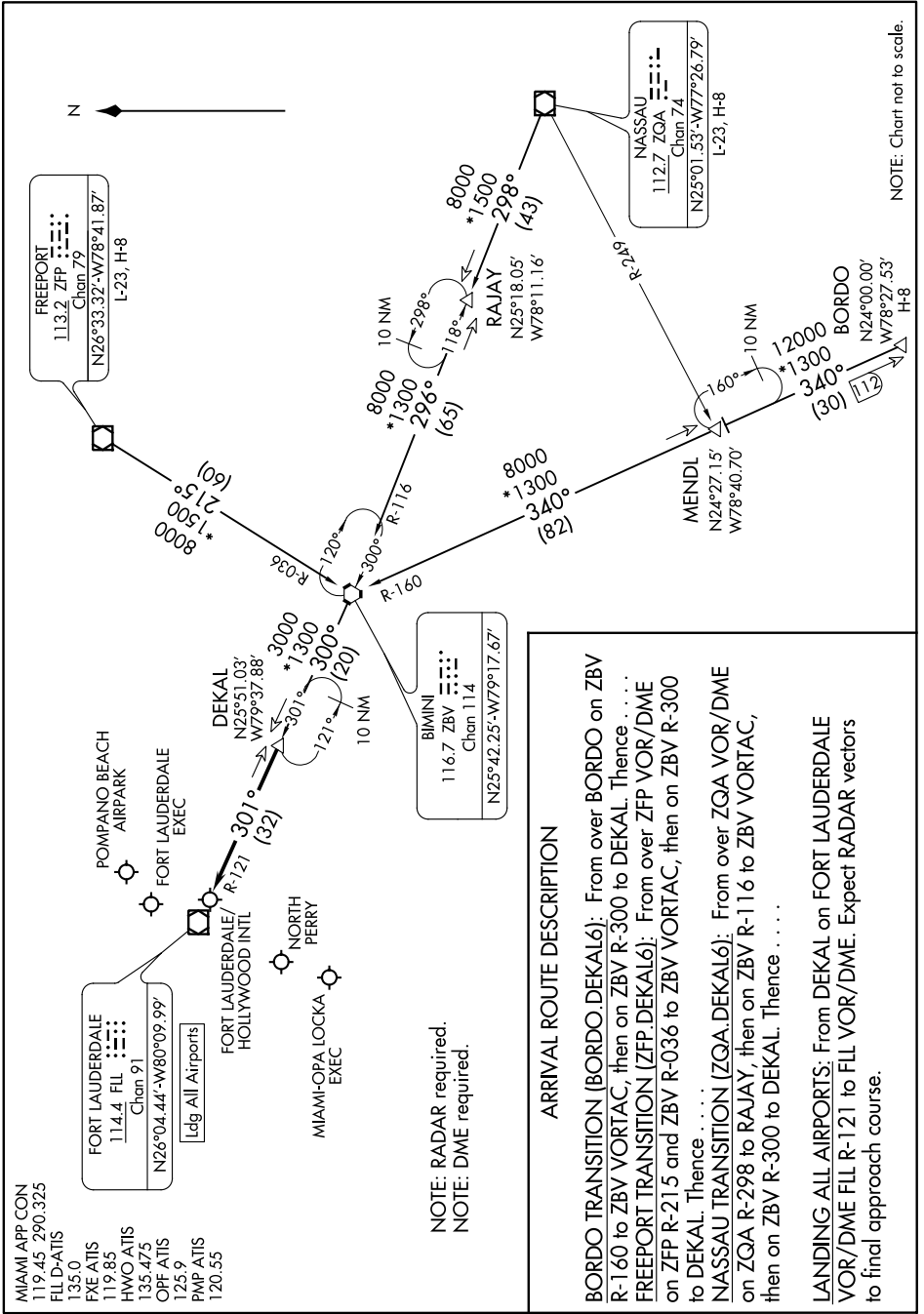


DEKAL SIX ARRIVAL

FORT LAUDERDALE, FLORIDA

SE-3, 04 NOV 2021 to 02 DEC 2021



MIAMI APP CON
119.45 290.325
FL/D-ATIS
135.0
FXE ATIS
119.85
HWO ATIS
135.475
OPF ATIS
125.9
PNP ATIS
120.55

FORT LAUDERDALE
114.4 FL
Chan 91
N26°04.44'-W80°09.99'
[Ldg All Airports]

DEKAL
N25°51.03'
W79°37.88'
Chan 114
N25°42.25'-W79°17.67'

NASSAU
112.7 ZQA
Chan 74
N25°01.53'-W77°26.79'
L-23, H-8

NOTE: RADAR required.
NOTE: DME required.

ARRIVAL ROUTE DESCRIPTION

BORDO TRANSITION (BORDO.DEKAL6): From over BORDO on ZBV R-160 to ZBV VORTAC, then on ZBV R-300 to DEKAL. Thence
FREEPORT TRANSITION (ZFP.DEKAL6): From over ZFP VOR/DME on ZFP R-215 and ZBV R-036 to ZBV VORTAC, then on ZBV R-300 to DEKAL. Thence
NASSAU TRANSITION (ZQA.DEKAL6): From over ZQA VOR/DME on ZQA R-298 to RAJAY, then on ZBV R-116 to ZBV VORTAC, then on ZBV R-300 to DEKAL. Thence
LANDING ALL AIRPORTS: From DEKAL on FORT LAUDERDALE VOR/DME FL R-121 to FL VOR/DME. Expect RADAR vectors to final approach course.

NOTE: Chart not to scale.

SE-3, 04 NOV 2021 to 02 DEC 2021

DEKAL SIX ARRIVAL

(DEKAL.DEKAL6) 22APR21

FORT LAUDERDALE, FLORIDA