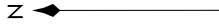
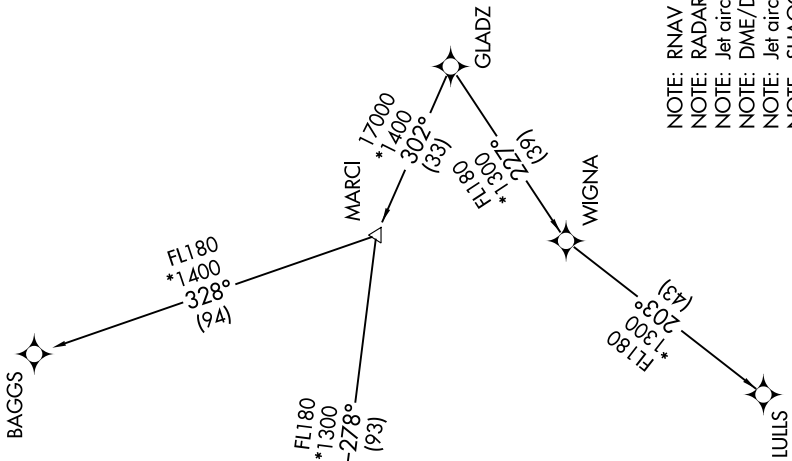


GLADZ ONE DEPARTURE (RNAV) Transition Routes

TOP ALTITUDE:
ASSIGNED BY ATC

D-ATIS
135.0
CLNC DEL
128.4
CPDLC
GND CON
121.4
FORT LAUDERDALE TOWER
119.3 257.8
MIAMI DEP CON
119.45 290.325 (Departing West)
126.05 251.1 (Departing East)



- NOTE: RNAV 1.
- NOTE: RADAR required.
- NOTE: Jet aircraft only.
- NOTE: DME/DME/IRU or GPS required.
- NOTE: Jet aircraft accelerate to 250K, if unable, advise ATC.
- NOTE: SHAGQ and BAGGS transitions ATC assigned except aircraft departing MIA.

(NARRATIVE ON FOLLOWING PAGE)

NOTE: Chart not to scale.

TAKEOFF MINIMUMS

Rwys 10L/R, 28L/R: Standard with minimum climb of 500' per NM to 580.