

LOC/DME I-ADI 111.75 Chan 54 (Y)	APP CRS 276°	Rwy Idg 8000	TDZE 65	Apt Elev 65
---	------------------------	-----------------	------------	----------------

ILS or LOC RWY 28L

FORT LAUDERDALE/HOLLYWOOD INTL (FLL)

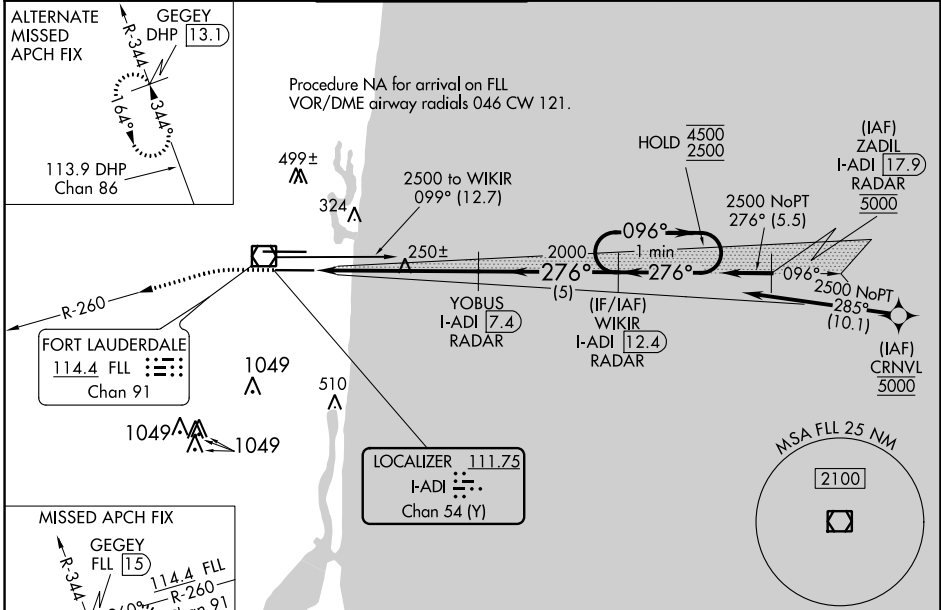
DME or RADAR required. RNP APCH-GPS. From CRNVL. RADAR required for procedure entry at ZADIL.

Inop table does not apply to S-ILS-28L. Simultaneous approach authorized.

MALSF

MISSED APPROACH: Climb to 1000 then climbing left turn to 3000 on FLL VOR/DME R-260 to GEGEY INT/FLL 15 DME and hold.

D-ATIS 135.0	MIAMI APP CON 133.775 285.6	FORT LAUDERDALE TOWER 119.3 257.8	GND CON 121.4	CLNC DEL 128.4	CPDLC
------------------------	---------------------------------------	--	-------------------------	--------------------------	-------



ELEV 65	TDZE 65					
1000	3000	FLL R-260	GEGEY INT	VGSi and ILS glidepath not coincident (VGSi Angle 3.00/TCH 69).	WIKIR I-ADI [12.4] RADAR	One Minute Holding Pattern
CATEGORY	A	B	C	D		
S-ILS 28L	265/40		200 (200-¾)			
S-LOC 28L	500/40	435 (500-¾)	500/50	435 (500-1)		
CIRCLING	680-1	615 (700-1)	800-2	800-2¼		
			735 (800-2)	735 (800-2¼)		

ELEV 65	TDZE 65
HIRL Rwy 10L-28R and 10R-28L	
FAF to MAP 5.9 NM	
Knots	60 90 120 150 180
Min:Sec	5:54 3:56 2:57 2:22 1:58

SE-3, 04 NOV 2021 to 02 DEC 2021

SE-3, 04 NOV 2021 to 02 DEC 2021