

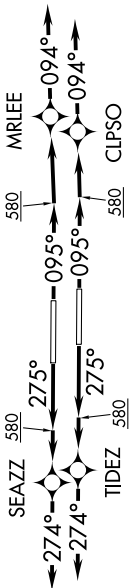
# MHITO ONE DEPARTURE (RNAV)

FORT LAUDERDALE, FLORIDA

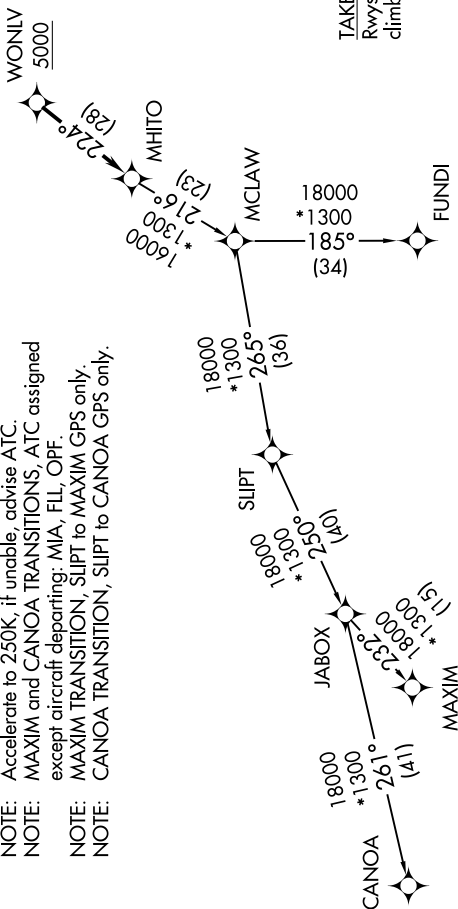
SE-3, 04 NOV 2021 to 02 DEC 2021

D-ATIS  
135.0  
CLNC DEL  
128.4  
CPBLC  
GND/CON  
121.4  
FORT LAUDERDALE TOWER  
119.3 257.8  
MIAMI DEP CON  
119.45 290.325

**TOP ALTITUDE:  
ASSIGNED BY ATC**



- NOTE: RNAV 1.
- NOTE: RADAR required.
- NOTE: Jet aircraft only.
- NOTE: DME/DME/IRU or GPS required.
- NOTE: Accelerate to 250K, if unable, advise ATC.
- NOTE: MAXIM and CANOA TRANSITIONS, ATC assigned except aircraft departing: MIA, FLL, OPE
- NOTE: MAXIM TRANSITION, SUIPT to MAXIM GPS only.
- NOTE: CANOA TRANSITION, SUIPT to CANOA GPS only.



**TAKEOFF MINIMUMS**  
Rwys 10L/R, 28L/R: Standard with minimum climb of 500' per NM to 580.

NOTE: Chart not to scale.

(NARRATIVE ON FOLLOWING PAGE)

SE-3, 04 NOV 2021 to 02 DEC 2021

# MHITO ONE DEPARTURE (RNAV)

FORT LAUDERDALE, FLORIDA  
FORT LAUDERDALE/HOLLYWOOD INTL (FLL)

12AUG21