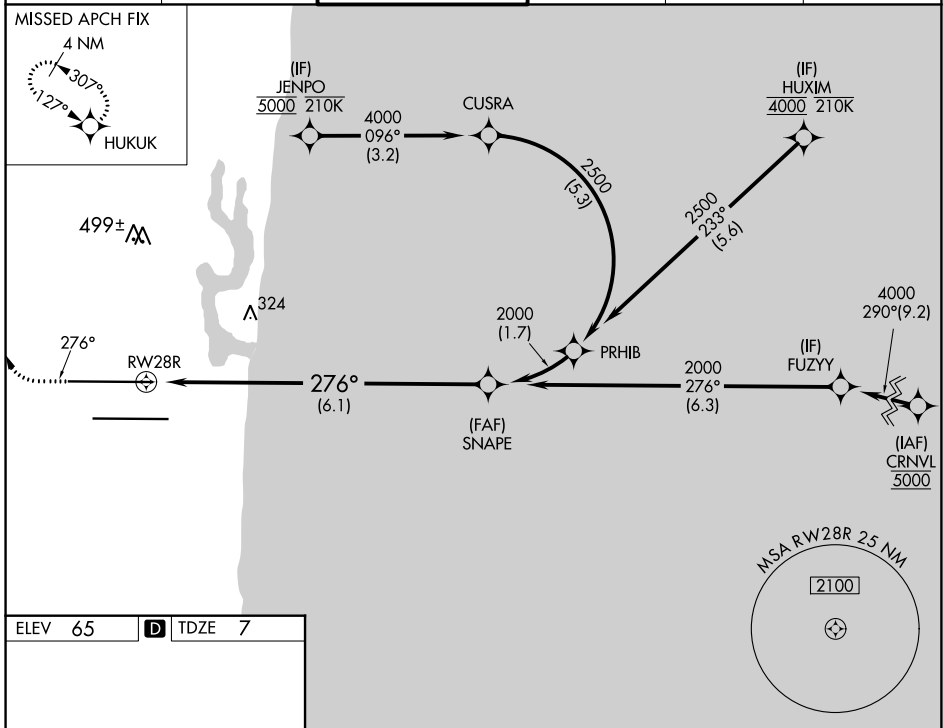


APP CRS	Rwy Idg	<b>8394</b>
<b>276°</b>	TDZE	<b>7</b>
	Apt Elev	<b>65</b>

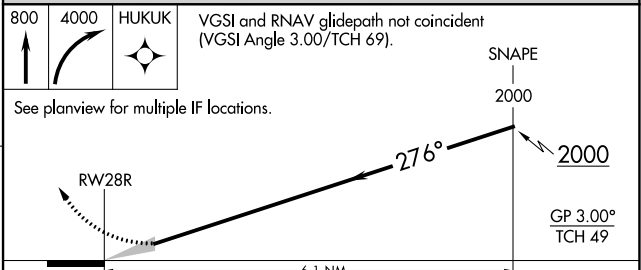
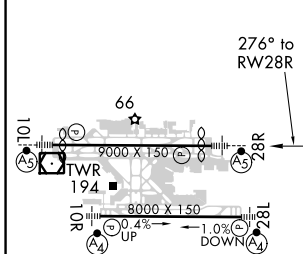
# RNAV (RNP) Z RWY 28R

FORT LAUDERDALE/HOLLYWOOD INTL (FLL)

<p>RNP AR APCH - GPS. RADAR required.</p> <p>Simultaneous approach authorized. For uncompensated Baro-VNAV systems, procedure NA below 7°C or above 54°C. For inop ALS, increase RNP 0.15 visibility to RVR 5500 and increase RNP 0.30 visibility to 1¾ SM.</p>			<p>MALSR</p>	<p>MISSED APPROACH: Climb to 800 then climbing right turn to 4000 direct HUKUK and hold, continue climb-in-hold to 4000.</p>	
D-ATIS	MIAMI APP CON	FORT LAUDERDALE TOWER	GND CON	CLNC DEL	CPDLC
<b>135.0</b>	<b>133.775 285.6</b>	<b>119.3 257.8</b>	<b>121.4</b>	<b>128.4</b>	



ELEV	65	D	TDZE	7
------	----	---	------	---



CATEGORY	A	B	C	D
RNP 0.15 DA		362/40	355 (300-¾)	
RNP 0.30 DA		618-1⅓	611 (600-1⅓)	

## AUTHORIZATION REQUIRED

SE-3, 04 NOV 2021 to 02 DEC 2021

SE-3, 04 NOV 2021 to 02 DEC 2021