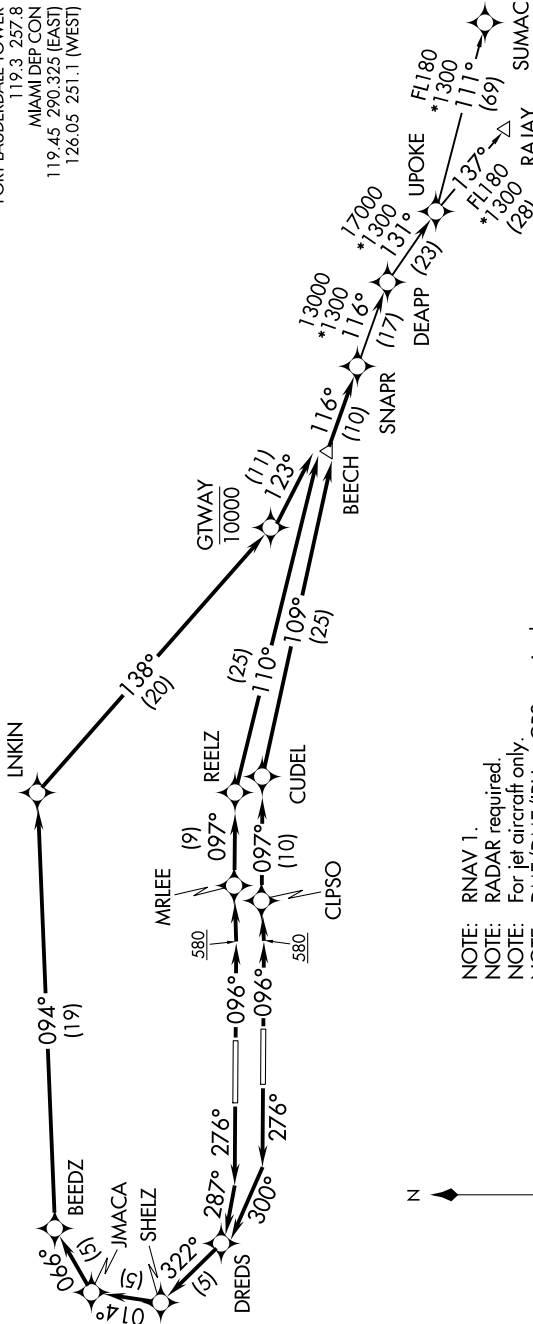


SNAPR ONE DEPARTURE (RNAV)

**TOP ALTITUDE:
ASSIGNED BY ATC**

TAKEOFF MINIMUMS
Rwys 10L/R, 28L/R: Standard with
minimum climb of 500' per NM to 580.

D-ATIS 135.0
CLNC DEL 128.4
CPDIC
GND CON 121.4
FORT LAUDERDALE TOWER 119.3 257.8
MIAMI DEP CON 119.45 290.325 (EAST)
126.05 251.1 (WEST)



- NOTE: RNAV 1.
- NOTE: RADAR required.
- NOTE: For jet aircraft only.
- NOTE: DME/DME/IRU or GPS required.
- NOTE: Accelerate to 250K, if unable, advise ATC.
- NOTE: RAJAY TRANSITION, UPOKE to RAJAY segment, GNSS only.
- NOTE: SUMAC TRANSITION, UPOKE to SUMAC segment, GNSS only.

(NARRATIVE ON FOLLOWING PAGE)

NOTE: Chart not to scale.

SNAPR ONE DEPARTURE (RNAV)