

# TEEKY ONE ARRIVAL (RNAV)

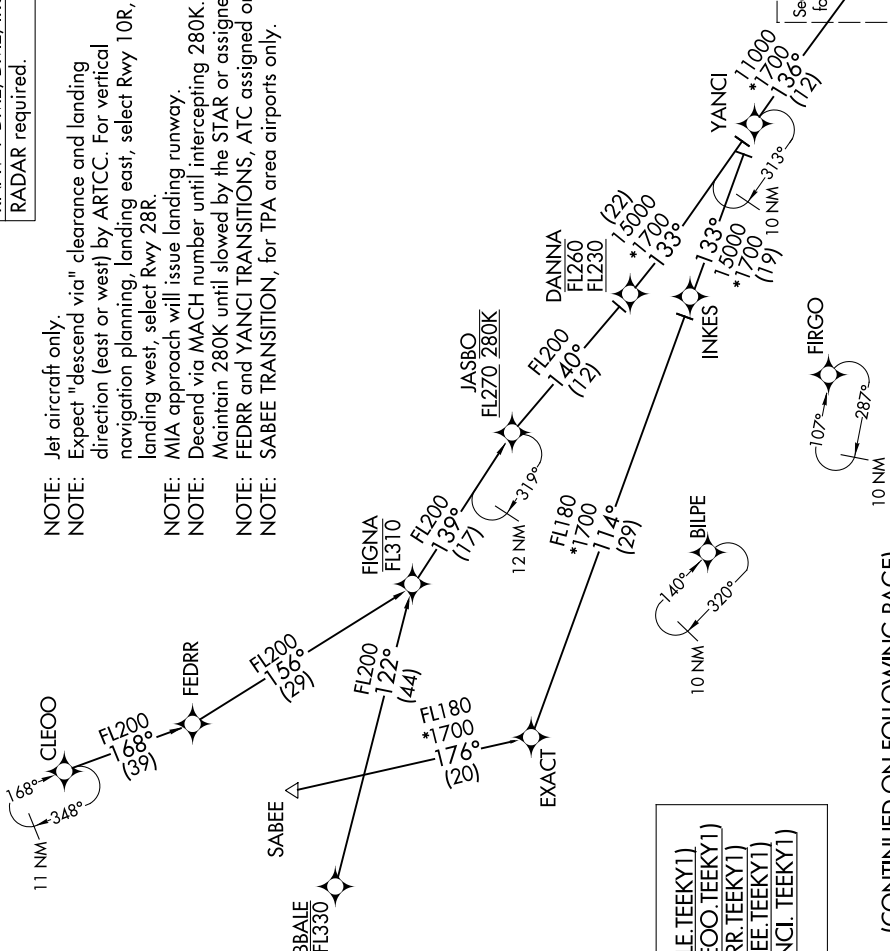
Transition Routes

FORT LAUDERDALE, FLORIDA

SE-3, 04 NOV 2021 to 02 DEC 2021

RNAV 1-DME/DME/IRU or GPS.  
RADAR required.

- NOTE: Jet aircraft only.
- NOTE: Expect "descend via" clearance and landing direction (east or west) by ARTCC. For vertical navigation planning, landing east, select Rwy 10R, landing west, select Rwy 28R.
- NOTE: MIA approach will issue landing runway.
- NOTE: Descend via MACH number until intercepting 280K.
- NOTE: Maintain 280K until slowed by the STAR or assigned by ATC.
- NOTE: FEDRR and YANCI TRANSITIONS, ATC assigned only.
- NOTE: SABEE TRANSITION, for TPA area airports only.



BBALE TRANSITION (BBALE.TEEKY1)  
 CLEOO TRANSITION (CLEOO.TEEKY1)  
 FEDRR TRANSITION (FEDRR.TEEKY1)  
 SABEE TRANSITION (SABEE.TEEKY1)  
 YANCI TRANSITION (YANCI.TEEKY1)

(CONTINUED ON FOLLOWING PAGE)

NOTE: Chart not to scale.

SE-3, 04 NOV 2021 to 02 DEC 2021

# TEEKY ONE ARRIVAL (RNAV)

Transition Routes

FORT LAUDERDALE, FLORIDA