

TEEKY ONE ARRIVAL (RNAV)

Arrival Routes

FORT LAUDERDALE, FLORIDA

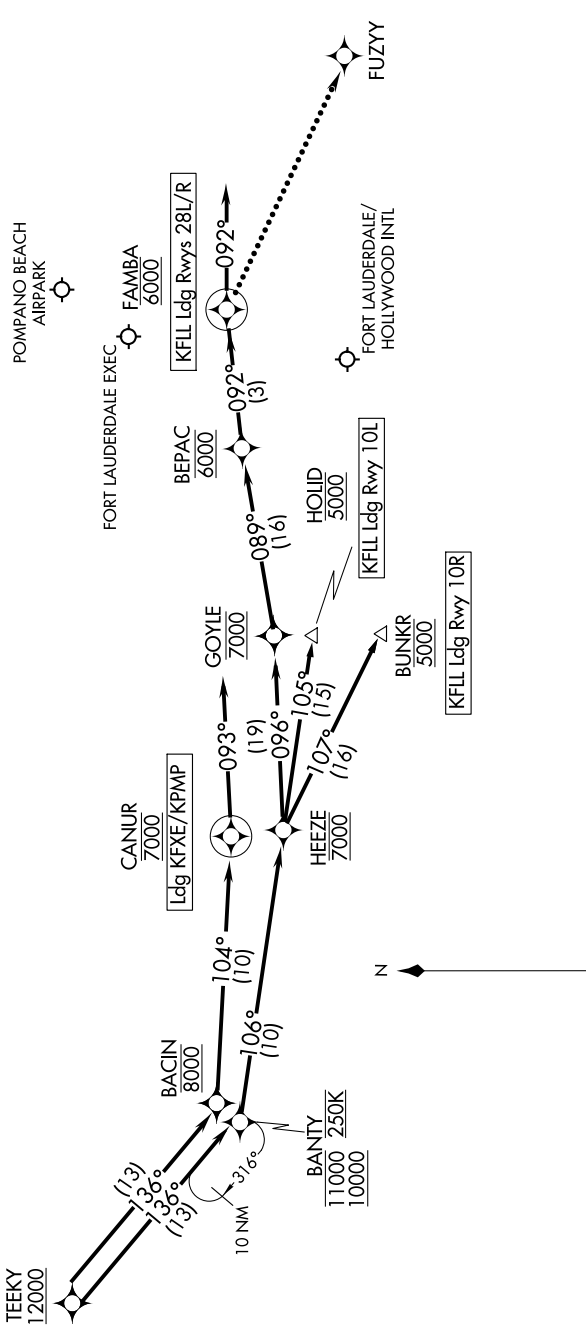
SE-3, 04 NOV 2021 to 02 DEC 2021

RNAV 1-DME/DME/IRU or GPS.
RADAR required.

NOTE: Jet aircraft only.
NOTE: Expect "descend via" clearance and landing direction (east or west) by ARTCC. For vertical navigation planning, landing east, select Rwy 10R, landing west, select Rwy 28R.

NOTE: MIA approach will issue landing runway.
NOTE: Descend via MACH number until intercepting 280K. Maintain 280K until slowed by the STAR or assigned by ATC.

MIAMI APP CON
133.775 371.9
FLL D-ATIS
135.0
FXE ATIS
119.85
PMP ATIS
120.55



NOTE: Chart not to scale.

(NARRATIVE ON FOLLOWING PAGE)

SE-3, 04 NOV 2021 to 02 DEC 2021

TEEKY ONE ARRIVAL (RNAV)

Arrival Routes

FORT LAUDERDALE, FLORIDA