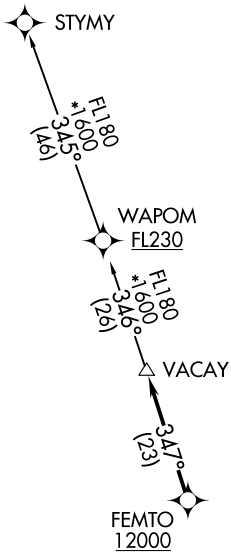


VACAY ONE DEPARTURE (RNAV)

FORT LAUDERDALE, FLORIDA

**TOP ALTITUDE:
ASSIGNED BT ATC**

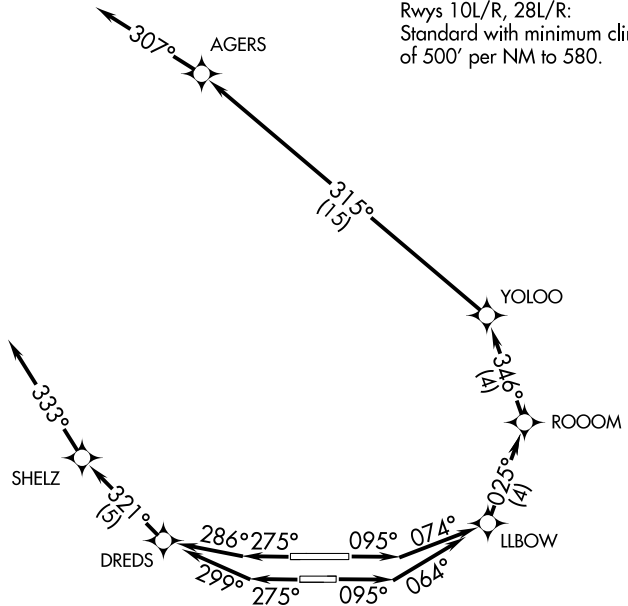
- D-ATIS 135.0
- CLNC DEL 128.4
- CPDLC 121.4
- GND CON 121.4
- FORT LAUDERDALE TOWER 119.3 257.8
- MIAMI DEP CON 126.05 251.1



- NOTE: RNAV 1.
- NOTE: RADAR required.
- NOTE: Jet aircraft only.
- NOTE: DME/DME/IRU or GPS required.
- NOTE: Accelerate to 250K, if unable, advise ATC.
- NOTE: WAPOM transition ATC assigned except aircraft landing: MCO, DAB, and MLB terminal areas.

TAKEOFF MINIMUMS

Rwys 10L/R, 28L/R:
Standard with minimum climb
of 500' per NM to 580.



(NARRATIVE ON FOLLOWING PAGE)

NOTE: Chart not to scale.

VACAY ONE DEPARTURE (RNAV)

(VACAY1.VACAY) 12AUG21

FORT LAUDERDALE, FLORIDA

FORT LAUDERDALE/HOLLYWOOD INTL (FLL)