

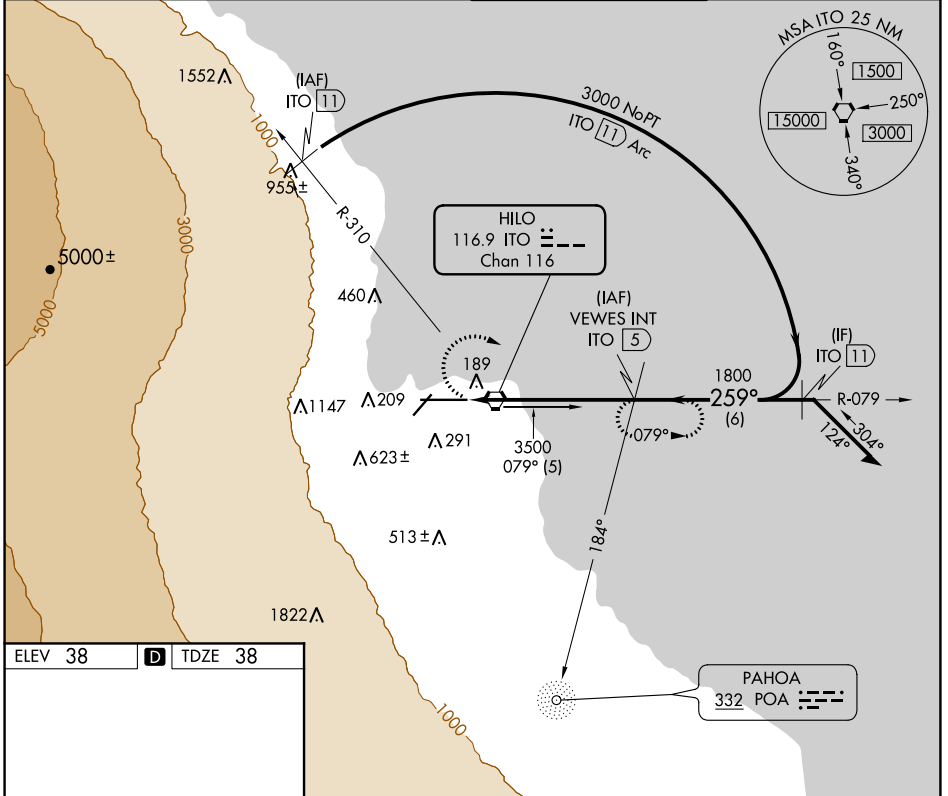
VORTAC ITO 116.9 Chan 116	APP CRS 259°	Rwy Idg 9800 TDZE 38 Apt Elev 38
---	------------------------	---

VOR/DME or TACAN RWY 26

HILO INTL (ITO) (PHTO)

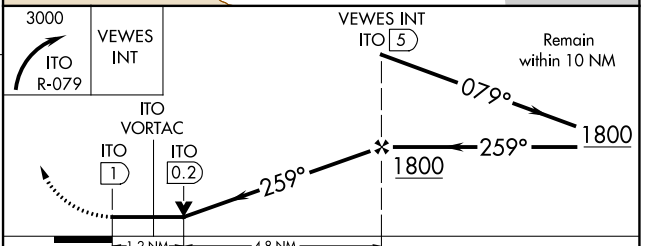
For inop ALS, increase S-26 Cat A/B visibility to 1 SM and Cat D to 1 1/4 SM. Circling NA south of Rwy 8-26. Helicopter visibility reduction below 3/4 SM NA.	MALS	MISSED APPROACH: Climbing right turn to 3000 on ITO VORTAC R-079 to VEVES/5 DME and hold.

ATIS 126.4	HILO APP CON* 119.7 269.2	HILO TOWER* 118.1(CTAF) 263.1	GND CON 121.9
----------------------	-------------------------------------	---	-------------------------



ELEV 38	D	TDZE 38
----------------	----------	----------------

REIL Rwy 3
MIRL Rwy 3-21
HIRL Rwy 8-26



CATEGORY	A	B	C	D
S-26	460-3/4	422 (500-3/4)		460-1 422 (500-1)
C CIRCLING	500-1 462 (500-1)	540-1 502 (600-1)	840-2 1/4 802 (900-2 1/4)	1320-3 1282 (1300-3)

VOR/DME or TACAN RWY 26

PAC, 07 OCT 2021 to 02 DEC 2021

PAC, 07 OCT 2021 to 02 DEC 2021