

VORTAC ITO <b>116.9</b> Chan <b>116</b>	APP CRS <b>145°</b>	Rwy Idg TDZE Apt Elev	<b>N/A</b> <b>N/A</b> <b>38</b>
---	------------------------	-----------------------------	---------------------------------------

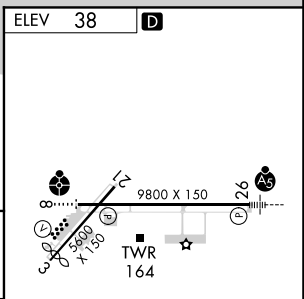
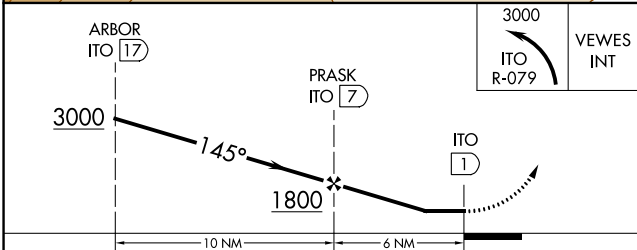
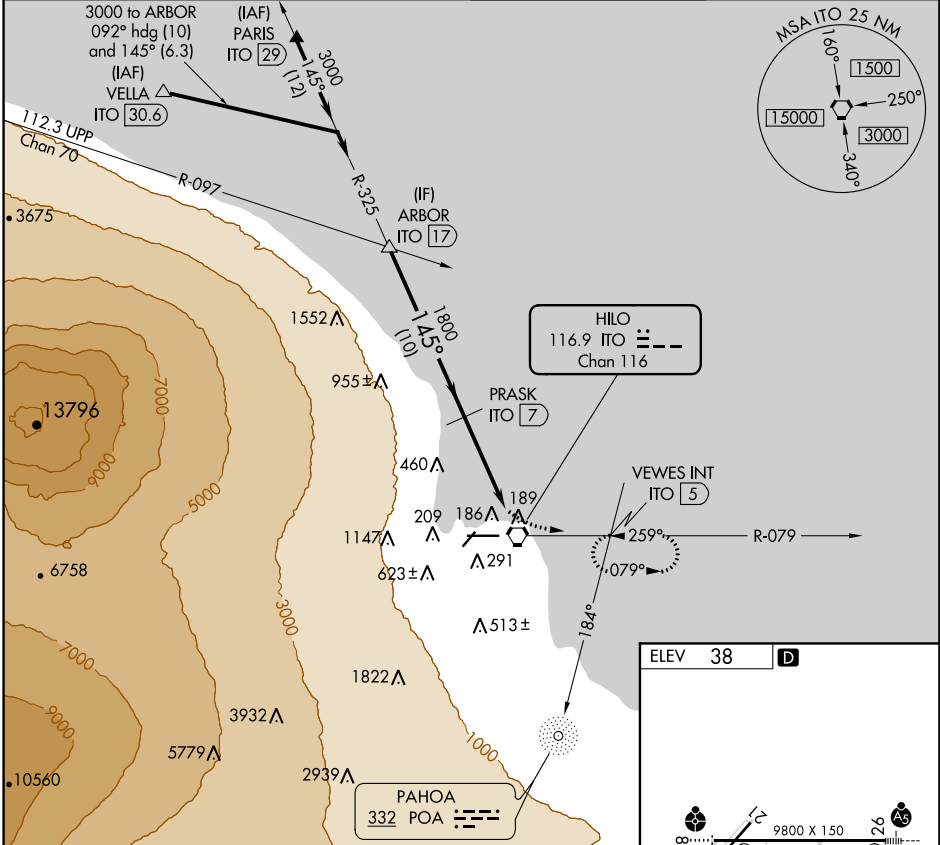
# VOR/DME or TACAN-A

HILO INTL (ITO) (PHTO)

**⚠** Circling NA south of Rwy 8-26.

**⚠** MISSED APPROACH: Climbing left turn to 3000 on ITO VORTAC R-079 to VEWES/5 DME and hold.

ATIS <b>126.4</b>	HILO APP CON* <b>119.7 269.2</b>	HILO TOWER* <b>118.1 (CTAF) 0 263.1</b>	GND CON <b>121.9</b>
----------------------	-------------------------------------	--	-------------------------



CATEGORY	A	B	C	D
<b>C</b> CIRCLING	500-1 462 (500-1)	540-1 502 (600-1)	840-2 1/4 802 (900-2 1/4)	1320-3 1282 (1300-3)

REIL Rwy 3  
MRL Rwy 3-21  
HIRL Rwy 8-26

PAC, 07 OCT 2021 to 02 DEC 2021

PAC, 07 OCT 2021 to 02 DEC 2021