

WAAS CH 63001 W35A	APP CRS 355°	Rwy Idg 6002 TDZE 532 Apt Elev 548
--	------------------------	---

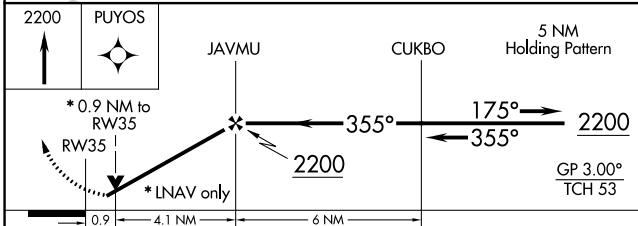
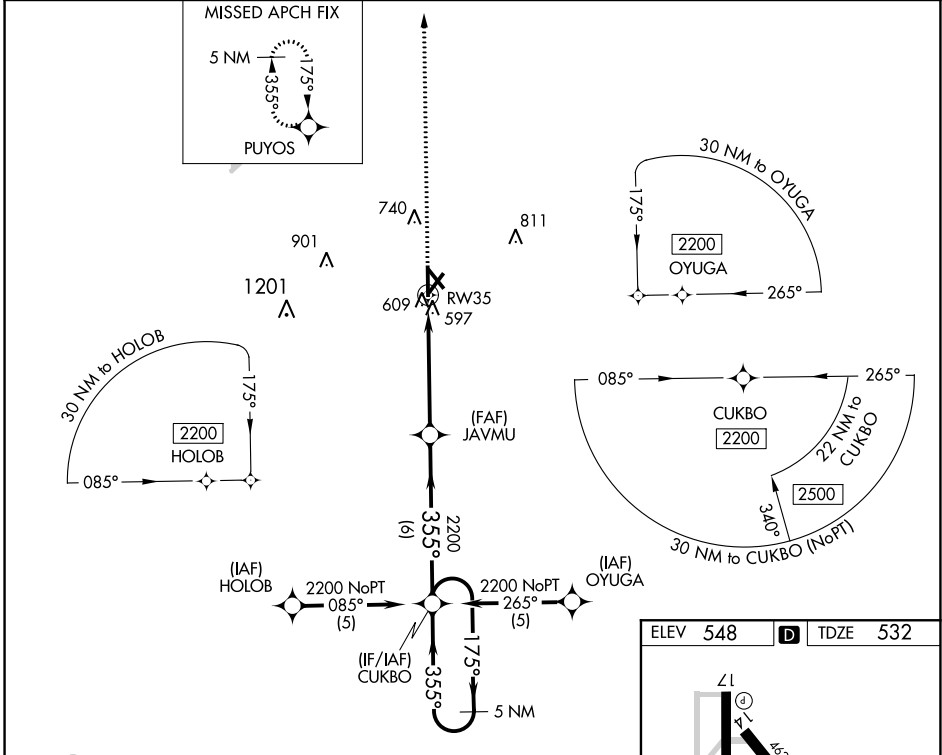
RNAV (GPS) RWY 35

COX FLD (P.R.X)

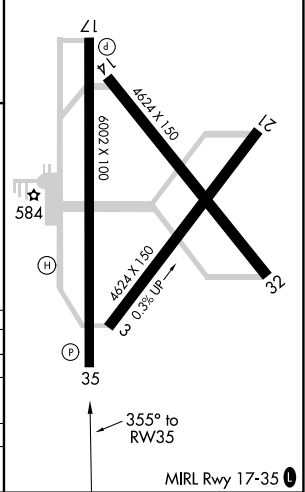
⚠ DME/DME RNP-0.3 NA. Visibility reduction by helicopters NA. When local altimeter setting not received, use Sulphur Springs altimeter setting and increase LPV DA to 859 feet, LNAV/VNAV DA to 1002 feet and all MDAs 80 feet; increase Circling Cats C/D visibility ¼ SM. For uncompensated Baro-VNAV systems, LNAV/VNAV NA below -16°C (4°F) or above 47°C (118°F). Baro-VNAV and VDP NA when using Sulphur Springs altimeter setting.

MISSED APPROACH: Climb to 2200 direct PUYOS and hold.

AWOS-3PT 119.675	FORT WORTH CENTER 124.875	UNICOM 122.975 (CTAF) ①
----------------------------	-------------------------------------	-----------------------------------



ELEV 548	D TDZE 532
----------	-------------------



CATEGORY	A	B	C	D
LPV DA		782-¾	250 (300-¾)	
LNAV/VNAV DA		925-1¼	393 (400-1¼)	
LNAV MDA		860-1	328 (400-1)	
CIRCLING	980-1¼ 432 (500-1¼)	1060-1¼ 512 (600-1¼)	1100-1½ 552 (600-1½)	1220-2¼ 672 (700-2¼)

MIRL Rwy 17-35 ①

SC-2, 04 NOV 2021 to 02 DEC 2021

SC-2, 04 NOV 2021 to 02 DEC 2021