

VOR/DME ZZV <b>114.95</b> Chan <b>96 (Y)</b>	APP CRS <b>217°</b>	Rwy Idg TDZE Apt Elev	<b>4999</b> <b>892</b> <b>900</b>
--	------------------------	-----------------------------	---

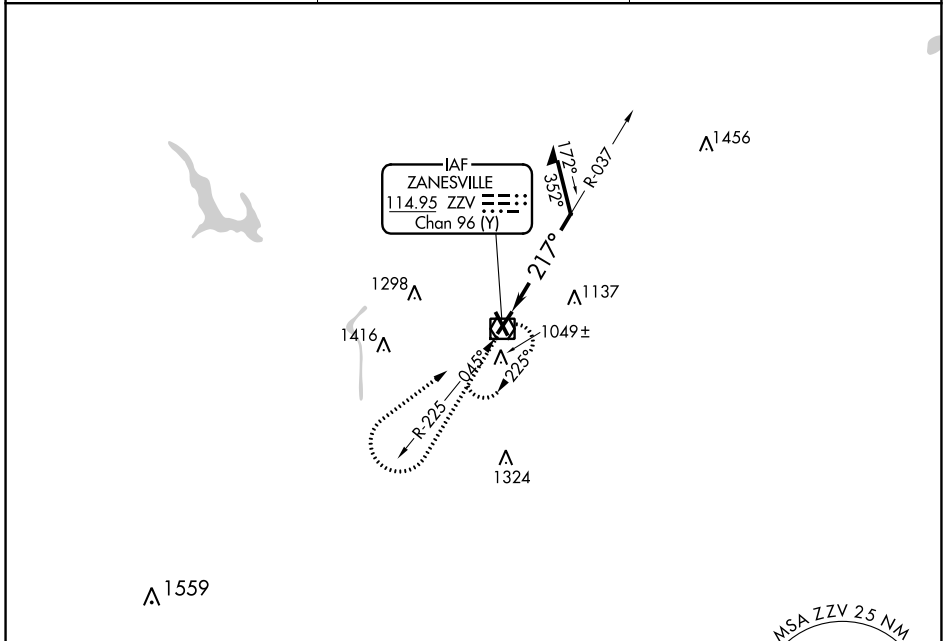
# VOR RWY 22

ZANESVILLE MUNI (ZZV)

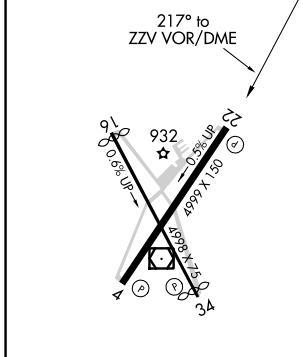
**▽** VDP NA when using Newark altimeter setting. When local altimeter setting not received, use Newark altimeter setting and increase all MDA 80 feet; increase S-22 Cat A visibility ¼ SM and Circling Cat C/D visibility ¼ SM.

**MISSED APPROACH:** Climb to 3000 then right turn direct ZZV VOR/DME and hold.

ASOS <b>114.95</b>	INDIANAPOLIS CENTER <b>124.45 370.9</b>	UNICOM <b>123.0 (CTAF) 0*</b>
-----------------------	--	----------------------------------



ELEV 900	TDZE 892
----------	----------



3000	ZZV	ZZV VOR/DME	Remain within 10 NM
------	-----	-------------	---------------------

CATEGORY	A	B	C	D
S-22	1720-1 828 (900-1)	1720-1¼ 828 (900-1¼)	1720-2½	828 (900-2½)
<b>C</b> CIRCLING	1720-1¼	820 (900-1¼)	1720-2½ 820 (900-2½)	1720-2¾ 820 (900-2¾)

HIRL Rwy 4-22 **0\***  
MIRL Rwy 16-34  
REIL Rwy 4, 16, 22 and 34 **0\***

EC-2, 04 NOV 2021 to 02 DEC 2021

EC-2, 04 NOV 2021 to 02 DEC 2021