

APP CRS	Rwy ldg	3510
301°	TDZE	2974
	Apt Elev	2977

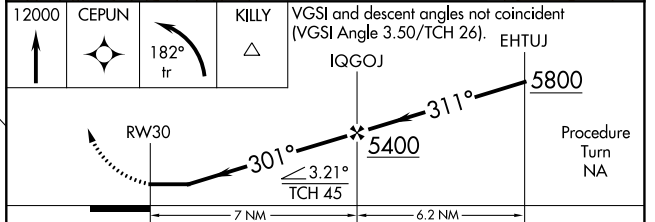
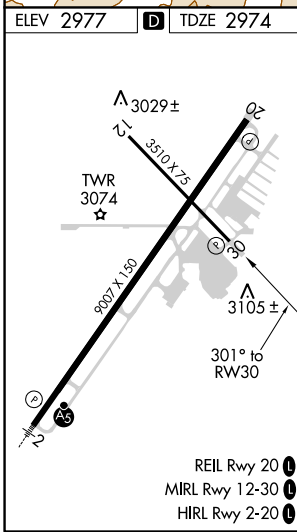
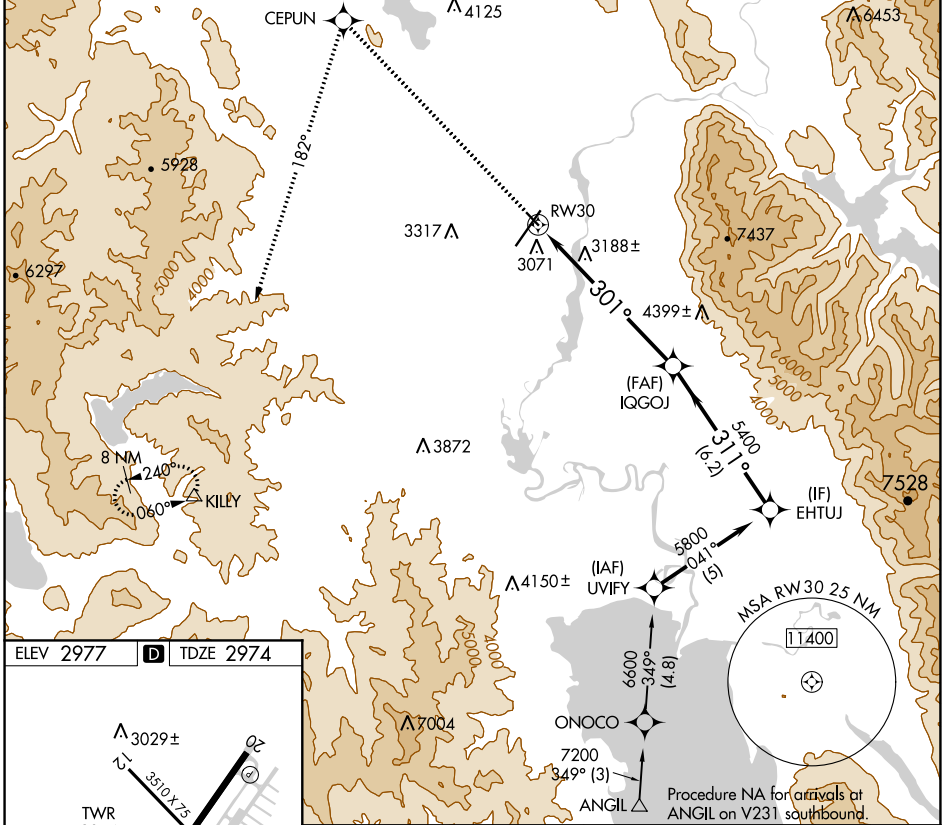
RNAV (GPS) RWY 30

GLACIER PARK INTL (GPI)

RNP APCH.	
	Rwy 30 helicopter visibility reduction below 3/4 SM NA.
	-1.5°C

MISSED APPROACH: Climb to 12000 direct CEPUN and left turn via track 182° to KILLY and hold, continue climb-in-hold to 12000.

ATIS	SALT LAKE CENTER	GLACIER TOWER*	GND CON	UNICOM
132.625	133.4 285.4	124.55 (CTAF) 0	121.6	122.95



CATEGORY	A	B	C	D
LNAV MDA	3500-1	526 (600-1)	3500-1½	526 (600-1½)
C CIRCLING	3520-1 543 (600-1)	3580-1 603 (700-1)	3640-1¾ 663 (700-1¾)	3760-2½ 783 (800-2½)

NW-1, 04 NOV 2021 to 02 DEC 2021

NW-1, 04 NOV 2021 to 02 DEC 2021