

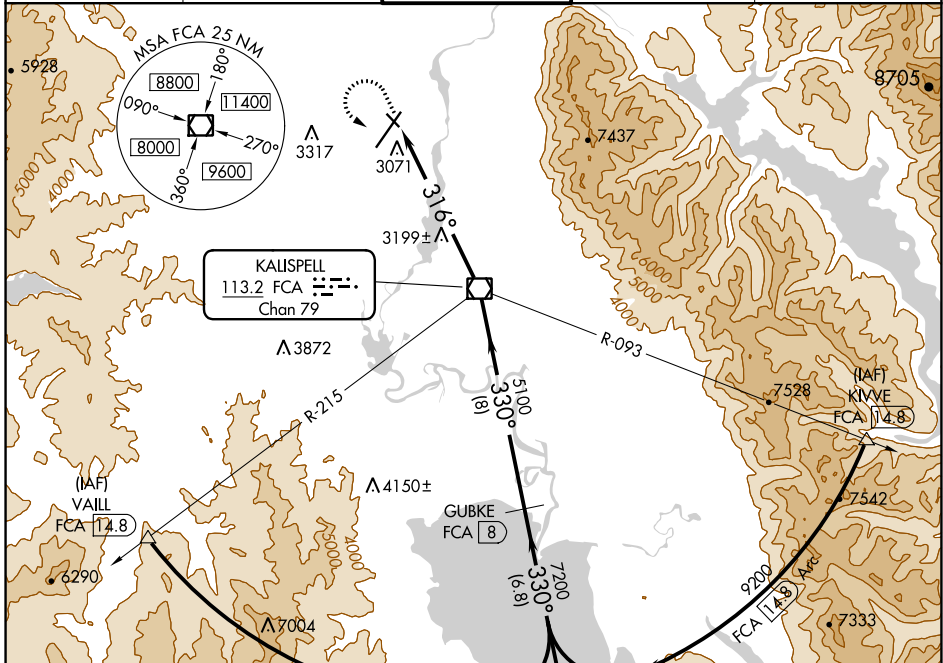
VOR/DME FCA 113.2 Chan 79	APP CRS 316°	Rwy Idg TDZE Apt Elev 3510 2974 2977
---	------------------------	--

VOR/DME RWY 30

GLACIER PARK INTL (GPI)

⚠ Helicopter visibility reduction below 1 SM not authorized. When VGSI inoperative, straight-in minimums not authorized at night.
⚠ -15°C MISSED APPROACH: Climb to 4000 then climbing left turn to 9300 via heading 130° and FCA VOR/DME R-150 to ITONE/14.8 DME and hold, continue climb-in-hold to 9300.

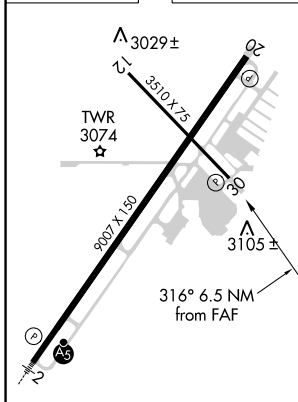
ATIS 132.625	SALT LAKE CENTER 133.4 285.4	GLACIER TOWER* 124.55 (CTAF) 0	GND CON 121.6	UNICOM 122.95
------------------------	--	--	-------------------------	-------------------------



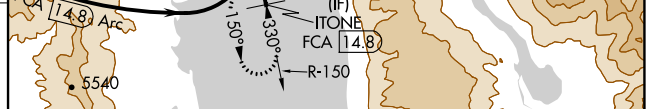
NW-1, 04 NOV 2021 to 02 DEC 2021

NW-1, 04 NOV 2021 to 02 DEC 2021

ELEV 2977 **D** TDZE 2974



REIL Rwy 20 **0**
 MIRL Rwy 12-30 **0**
 HIRL Rwy 2-20



CATEGORY	A	B	C	D
S-30	3480-1	506 (600-1)	3480-1½	506 (600-1½)
C CIRCLING	3520-1 543 (600-1)	3580-1 603 (700-1)	3640-1¾ 663 (700-1¾)	3760-2½ 783 (800-2½)