

VOR/DME ATR <b>112.6</b> Chan <b>73</b>	APP CRS <b>234°</b>	Rwy Ldg <b>5331</b> TDZE <b>51</b> Apt Elev <b>50</b>
-----------------------------------------------	------------------------	-------------------------------------------------------------

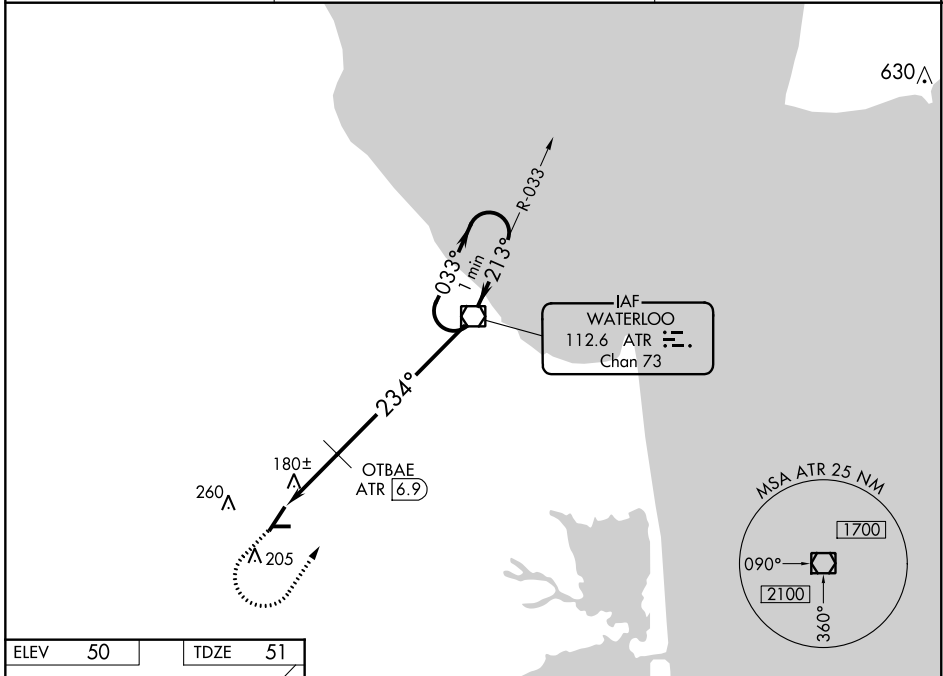
# VOR RWY 22

DELAWARE COASTAL (GED)

- ▼ When local altimeter setting not received, use Salisbury altimeter setting and increase all MDA 60 feet; increase S-22 and Circling Cats C/D visibility ¼ mile;
- ▲ OTBAE fix minimums increase S-22 and Circling Cats C/D visibility ¼ mile. Circling Rwy 10, 28 NA at night.

MISSED APPROACH: Climb to 800 then climbing left turn to 3000 direct ATR VOR/DME and hold.

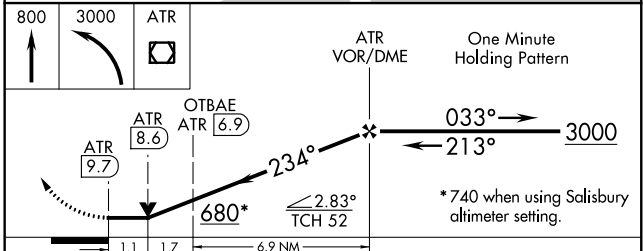
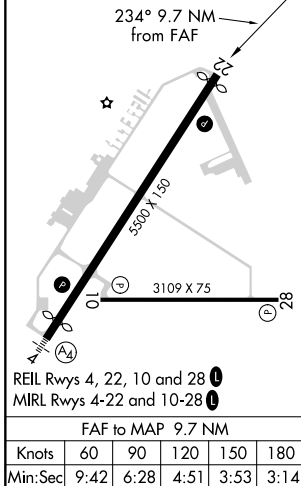
ASOS <b>118.375</b>	DOVER APP CON <b>132.425 257.875</b>	UNICOM <b>123.0</b> (CTAF) <b>0</b>
------------------------	-----------------------------------------	----------------------------------------



NE-3, 04 NOV 2021 to 02 DEC 2021

NE-3, 04 NOV 2021 to 02 DEC 2021

ELEV 50	TDZE 51
---------	---------



CATEGORY	A	B	C	D
S-22	680-1	629 (700-1)	680-1¾	629 (700-1¾)
<b>C</b> CIRCLING	680-1	630 (700-1)	720-1¾ 670 (700-1¾)	720-2 670 (700-2)
OTBAE FIX MINIMUMS				
S-22	440-1	389 (400-1)	440-1⅛	389 (400-1⅛)
<b>C</b> CIRCLING	560-1 510 (600-1)	580-1 530 (600-1)	720-1¾ 670 (700-1¾)	720-2 670 (700-2)