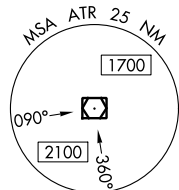


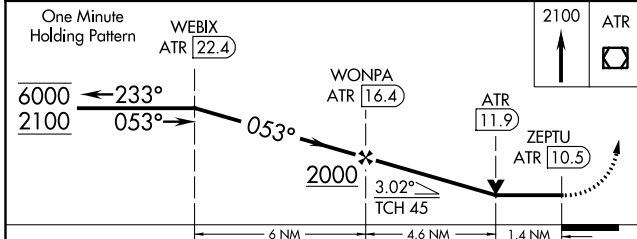
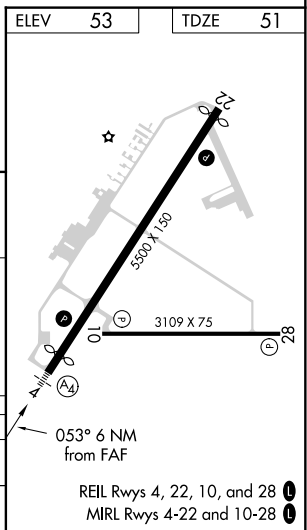
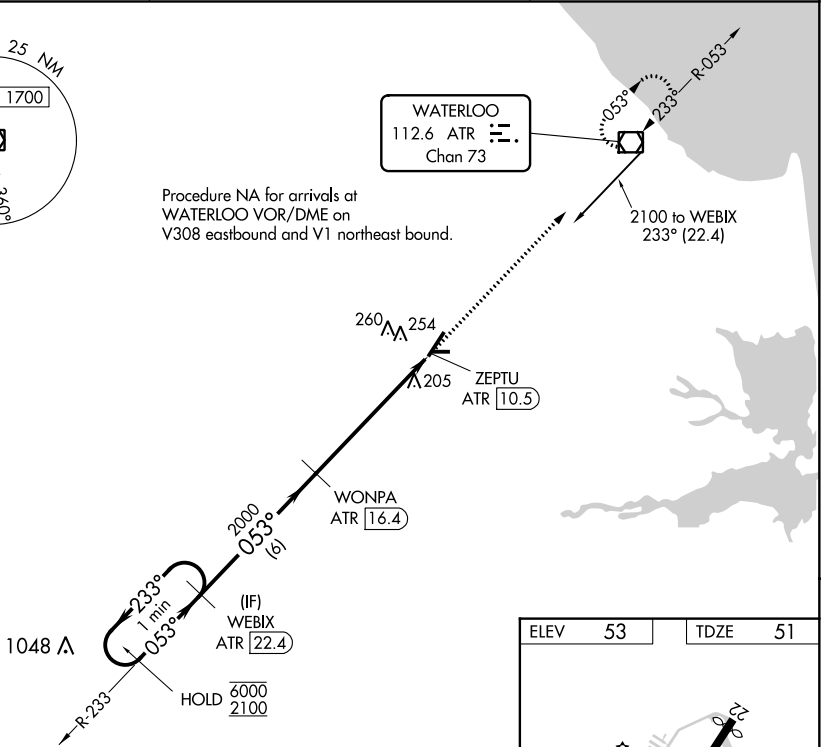
VOR/DME ATR	APP CRS	Rwy Idg	<b>5130</b>
<b>112.6</b>	<b>053°</b>	TDZE	<b>51</b>
Chan <b>73</b>		Apt Elev	<b>53</b>

**VOR RWY 4**  
DELAWARE COASTAL (GED)

DME required.		MALS	MISSED APPROACH: Climb to 2100 direct ATR VOR/DME and hold.
<p>▼ Rwy 4 helicopter visibility reduction below 3/4 SM NA. When local altimeter setting not received, use Salisbury altimeter setting increase all MDA 60 feet; increase S-4 Cats C/D visibility 1/8 mile, and Cat C Circling visibility 3/8 SM. Inop table does not apply.</p>		<p>(A4) </p>	
ASOS	DOVER APP CON	UNICOM	
<b>118.375</b>	<b>132.425 257.875</b>	<b>123.0 (CTAF) 1</b>	



Procedure NA for arrivals at WATERLOO VOR/DME on V308 eastbound and V1 northeast bound.



CATEGORY	A	B	C	D
S-04	540-1	489 (500-1)	540-1 3/8	489 (500-1 3/8)
CIRCLING	560-1 507 (600-1)	580-1 527 (600-1)	580-1 1/2 527 (600-1 1/2)	620-2 567 (600-2)

NE-3, 04 NOV 2021 to 02 DEC 2021

NE-3, 04 NOV 2021 to 02 DEC 2021